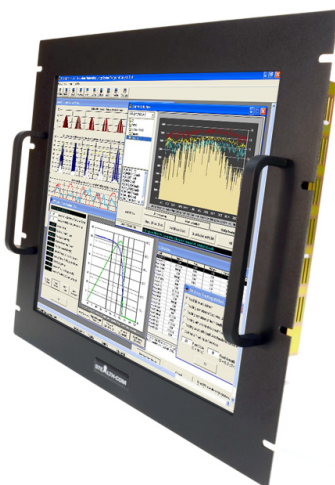


## 19" RACK MOUNT LCD MONITOR (DISCONTINUED)



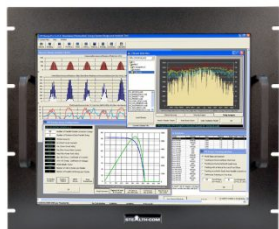
### ***Model: SV-1901-RM***

- Rack Mount LCD 19" Industrial Grade
- Installs in standard 19" rack cabinets
- Touch Screen Standard (Capacitive or Resistive)
  - NEMA 4/IP65 Environmentally Sealed
  - Wide Viewing Angles
- 250 Nits of Brightness, Adjustable Controls
  - VGA & DVI-D video connectors
  - cULus Listed
  - 2 Year Warranty

***(Important Notice: The SV-1901-RM model is now end of life and is replaced by the functional equivalent model SV-1905-RM.)***



## GALLERY IMAGES



## PRODUCT DESCRIPTION

Stealth builds high quality LCD monitors suited for industrial and commercial applications. The model SV-1901-RM is our 19" Rack Mount LCD is easily installed into industry standard 19" EIA rack cabinets and enclosures in minutes. Our Rackmount LCD products are built with an environmentally sealed NEMA 4 / IP65 front panel that is resistant to dust/dirt penetration or even liquid splashes.

All of our Ruggedized Displays are available with various Touch Screen options including Resistive or Capacitive. Our displays have wide viewing angles, 250 Nits of Brightness with adjustable controls and comes standard with a 2 Year warranty with extended warranty options available.



Prior to shipping, each and every display is put through Stealth's rigorous QA burn-in procedure that is documented and controlled through our ISO 9001 quality system and in compliance with being cULus Listed, UL 60950-1 & CAN/CSA C22.2 No. 60950-1-07.

Sparton Rugged Electronics under the brands of Aydin & Stealth offer a wide range of LCD product offerings including Panel mount, Rack mount and Open Frame designs as standard off-the-shelf products in 8.4" up to 24" diagonal sizes. Our Rugged LCD products are constructed from solid steel and will meet the demands of your application without breaking your budget.

## ADDITIONAL INFORMATION

<b>Bezel Type</b>	Rack Mount
<b>Screen Size</b>	19.0" (Diagonal)
<b>Aspect Ratio</b>	5:4
<b>Native Resolution</b>	1280 x 1024 (Auto sync from 640 x 480 to 1280 x 1024)
<b>Horizontal Frequency</b>	30 kHz ~ 83 kHz
<b>Vertical Frequency</b>	56 Hz ~ 75 Hz
<b>Pixel Pitch</b>	0.294mm x 0.294mm
<b>Response Time</b>	5ms Typical
<b>Type</b>	LCD c/w LED Backlighting
<b>Video Input Connectors</b>	VGA / HD-15 DVI Compliant Digital HDCP (DVI-D)
<b>Viewing Angle</b>	170° / 160° (H / V) - (Viewing angle of LCD panel without touch)
<b>Contrast Ratio</b>	1000:1 (typical) SmartContrast: 20,000,000:1
<b>Luminance (Brightness)</b>	250 cd/m2 typical at center (250 Nits)
<b>Viewable Image Size</b>	Horizontal: 14.81" / 376.32 mm, Vertical: 11.85" / 301.06 mm
<b>Input</b>	AC Input: 100-240V, 50-60Hz, 1.5A
<b>Control Buttons (Rear mounted)</b>	Smart Image, Down, Up, Menu/OK, Power ON/OFF
<b>Controls On-Screen Display</b>	Brightness, Contrast, Auto Adjust, Image Position, Image Adjust, Color Adjust, Display Mode, Language Select, OSM Lockout, OSM Time-out
<b>Environmental Rating</b>	Standard Bezel: NEMA 4 / IP65 Front Panel (when properly installed) protection against windblown dust and rain, splashing water, and hose-directed water
<b>Environmental</b>	Operating Temperature: 0 - 40C (32 to 104 F) Storage Temperature: -20~60C (-4~140F) Operating: Relative Humidity 20% ~ 80% Storage Relative Humidity: 20% ~ 80%

<b>Approvals</b>	cULus Listed, UL 60950-1 & CAN/CSA C22.2 No. 60950-1-07
<b>Panel Finish</b>	Black Baked Enamel (Standard)
<b>Unit Weight</b>	Unit Weight: 15.5 Lbs (7 Kg)*
	Shipping Weight: 21.90 Lbs (9.94 Kg)*
<b>Dimensions</b>	* Weight may vary depending on configuration
	Rack Mount: 19.0"(W) x 15.72"(H) x 2.56"(D) 482.6mm x 399.28mm x 65mm
	SV-1901-RM-RT – Resistive Touch with Serial/DB9 and USB Interface
<b>Available Models</b>	SV-1901-RM-CT-SERIAL – Capacitive Touch with Serial/DB9 Interface
	SV-1901-RM-CT-USB – Capacitive Touch Screen with USB interface
<b>Warranty</b>	2 Year Parts & Labor
	1 Year Extended Warranty available (see Configurator/Price List)
<b>Disclaimer</b>	Note: Specifications are subject to change without notice.