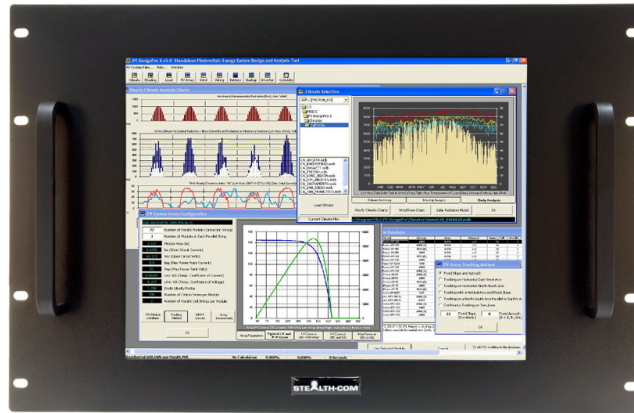


## 15" RACK MOUNT LCD MONITOR - SV-1510-RM (DISCONTINUED)



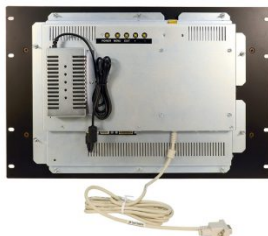
### ***Model: SV-1510-RM***

- Rack Mount LCD, 15" Industrial Grade
- Installs in standard 19" rack cabinets
- NEMA 4/IP65 Environmentally Sealed
- Resistive Touch Screen Standard c/w USB and Serial Connections
  - Optional Capacitive Touchscreen
    - Wide Viewing Angles
  - VGA & DVI-D video connectors
    - cULus Listed
    - 2 Year Warranty

***(Important Notice: The SV-1510-RM model is now end of life and is replaced by the functional equivalent model SV-1505-RM.)***



## GALLERY IMAGES



## PRODUCT DESCRIPTION

Stealth builds high quality LCD monitors suited for industrial and commercial applications. Our 15" Rack Mount LCD Monitor is easily installed into industry standard 19" EIA rack cabinets and enclosures in minutes. Our rack mountable LCD products are built with an environmentally sealed NEMA 4 / IP65 front panel that is resistant to dust/dirt penetration or even liquid splashes.

The SV-1510-RM panel mount lcd comes equipped with Resistive Touch Screen standard and Capacitive touch screen is also available as an option.



Prior to shipping, each and every display is put through Stealth's rigorous QA burn-in procedure that is documented and controlled through our ISO 9001 quality system and in compliance with being cULus Listed, UL 60950-1 & CAN/CSA C22.2 No. 60950-1-07.

Stealth offers a range of LCD product offerings including Panel mount, Rack mount and Open Frame designs as standard off-the-shelf products in 8.4" up to 24" diagonal sizes. Our LCD products are constructed from solid steel and will meet the demands of your application without breaking your budget.

**ADDITIONAL INFORMATION**

<b>Bezel Type</b>	Rack Mount
<b>Screen Size</b>	15.0" (Diagonal)
<b>Aspect Ratio</b>	4:3
<b>Native Resolution</b>	1024 x 768 (Auto sync from 640 x 480 to 1024 x 768)
<b>Horizontal Frequency</b>	37.9 kHz ~ 62.4 kHz
<b>Vertical Frequency</b>	48.8 kHz ~ 75.1 Hz
<b>Pixel Pitch</b>	0.297mm x 0.297mm
<b>Response Time</b>	35 ms
<b>Type</b>	LCD c/w LED Backlighting Backlight Life: 50,000 Hrs Typical
<b>Video Input Connectors</b>	VGA / HD-15 DVI Compliant Digital HDCP (DVI-D)
<b>Viewing Angle</b>	65 (up), 85 (down), 85 (left), 85 (right)
<b>Contrast Ratio</b>	1500:1 (typical)
<b>Luminance (Brightness)</b>	350 cd/m2 typical at center (350 Nits)
<b>Viewable Image Size</b>	Horizontal: 11.97" / 304.1 mm, Vertical: 8.98" / 228.1 mm
<b>Input</b>	90 ~ 264V AC, 47~63Hz External Power Supply (rear mounted) 12V DC Power Jack at LCD
<b>Control Buttons (Rear mounted)</b>	Power Switch, Menu/Select, Exit/Back, Select (+,-), Auto, Hot Brightness (+,-)
<b>Controls On-Screen Display</b>	Brightness, Contrast, Auto Adjust, Image Position, Image Adjust, Color Adjust, Display Mode, Language Select, OSM Lockout, OSM Time-out
<b>Environmental Rating</b>	Standard Bezel: NEMA 4 / IP65 Front Panel (when properly installed) protection against windblown dust and rain, splashing water, and hose-directed water

## **Environmental**

Operating Temperature: 0 - 40C (32 to 104 F)

Storage Temperature: 0~60C (32~140F)

Relative Humidity: 10% ~ 90% non-condensing (Operating & Non-Operating)

Operating Altitude: 0 to 10,000 ft.

Storage Altitude: 0 to 40,000 ft.

## **Shock**

30g's, 11ms, ½ Sine

## **Vibration**

1g RMS, 20-500Hz

## **Approvals**

cULus Listed, UL 60950-1 & CAN/CSA C22.2 No. 60950-1-07

## **Cooling**

Natural Convection (no fan)

## **Panel Finish**

Black Baked Enamel (Standard)

## **Unit Weight**

Unit Weight: 12 Lbs (5.4kg)

## **Dimensions**

See Drawings

## **Available Models**

SV-1510-RM: Resistive and Capacitive Touchscreen with Serial and USB Interfaces with AC power input

## **Warranty**

2 Year Parts & Labor

## **Disclaimer**

Note: Specifications are subject to change without notice.