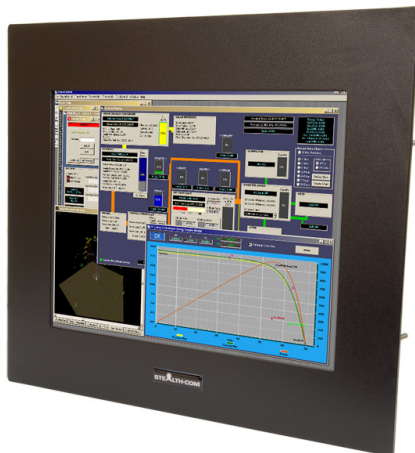


15" PANEL MOUNT LCD MONITOR - SV-1510-PM (DISCONTINUED)



Model: SV-1510-PM

- Panel Mount LCD, 15" Industrial Grade
- NEMA 4/IP65 Environmentally Sealed
- Resistive Touch Screen Standard c/w USB and Serial Connections
 - Optional Capacitive Touchscreen
 - Wide Viewing Angles
- Stainless Steel (NEMA 4X) & Custom painted bezel options
 - VGA & DVI-D video connectors
 - cULus Listed
 - 2 Year Warranty

(Important Notice: The SV-1510-PM model is now end of life and is replaced by the functional equivalent model SV-1505-PM.)



GALLERY IMAGES



PRODUCT DESCRIPTION

Stealth builds high quality LCD monitors suited for industrial and commercial applications. Our 15" Panel Mount LCD Monitor comes equipped with an environmentally sealed NEMA 4 / IP65 front panel that is resistant to splashes or hose downs. All Stealth Panel Mount LCD products are easily installed by securing the rear studs into your console, panel or wall.

The SV-1510-PM panel mount lcd comes equipped with Resistive Touch Screen standard and Capacitive touch screen is also available as an option.



Prior to shipping, each and every display is put through Stealth's rigorous QA burn-in procedure that is documented and controlled through our ISO 9001 quality system and in compliance with being cULus Listed, UL 60950-1 & CAN/CSA C22.2 No. 60950-1-07.

We offer Panel mount, Rack mount and Open Frame designs as standard off-the-shelf products in 8.4" up to 24" diagonal sizes. Stealth's LCD products are environmentally sealed to NEMA 4 (4X with Stainless Steel bezel) / IP65 and are ideal for applications where dirt, dust, moisture and water are present. Stealth's rugged LCD products are constructed from solid steel and stainless steel for corrosion resistance applications.

ADDITIONAL INFORMATION

Bezel Type	Panel Mount
Screen Size	15.0" (Diagonal)
Aspect Ratio	4:3
Native Resolution	1024 x 768 (Auto sync from 640 x 480 to 1024 x 768)
Horizontal Frequency	37.9 kHz ~ 62.4 kHz
Vertical Frequency	48.8 kHz ~ 75.1 Hz
Pixel Pitch	0.297mm x 0.297mm
Response Time	35 ms
Type	LCD c/w LED Backlighting Backlight Life: 50,000 Hrs Typical
Video Input Connectors	VGA / HD-15 DVI Compliant Digital HDCP (DVI-D)
Viewing Angle	65 (up), 85 (down), 85 (left), 85 (right)
Contrast Ratio	1500:1 (typical)
Luminance (Brightness)	350 cd/m2 typical at center (350 Nits)
Viewable Image Size	Horizontal: 11.97" / 304.1 mm, Vertical: 8.98" / 228.1 mm
Input	90 ~ 264V AC, 47~63Hz External Power Supply (rear mounted) 12V DC Power Jack at LCD Power Consumption: <25W typical
Control Buttons (Rear mounted)	Power Switch, Menu/Select, Exit/Back, Select (+,-), Auto, Hot Brightness (+,-)
Controls On-Screen Display	Brightness, Contrast, Auto Adjust, Image Position, Image Adjust, Color Adjust, Display Mode, Language Select, OSM Lockout, OSM Time-out

Environmental Rating

Standard Bezel: NEMA 4 / IP65 Front Panel (when properly installed) protection against windblown dust and rain, splashing water, and hose-directed water

Optional Stainless Steel Bezel: NEMA 4X / IP65 Front Panel (when properly installed) corrosion protection, protection against windblown dust and rain, splashing water, and hose-directed water

Operating Temperature: 0 – 40C (32 to 104 F)

Storage Temperature: 0~60C (32~140F)

Relative Humidity: 10% ~ 90% non-condensing (Operating & Non-Operating)

Operating Altitude: 0 to 10,000 ft.

Storage Altitude: 0 to 40,000 ft.

Environmental

Shock

30g's, 11ms, ½ Sine

Vibration

1g RMS, 20-500Hz

Approvals

cULus Listed, UL 60950-1 & CAN/CSA C22.2 No. 60950-1-07

Cooling

Natural Convection (no fan)

Panel Finish

Black Baked Enamel (Standard)

Stainless Steel – Brushed #304 (Optional)

Unit Weight

Unit Weight: 12 Lbs (5.4kg)

Dimensions

See Drawings

Available Models

SV-1510-PM: Resistive and Capacitive Touchscreen with Serial and USB Interfaces with AC power input

Warranty

2 Year Parts & Labor

1 Year Extended Warranty available (see Configurator/Price List)

Disclaimer

Note: Specifications are subject to change without notice.