

## 24" ALL WEATHER LCD MONITOR, SUNLIGHT READABLE DISPLAY (DISCONTINUED)



**\$3,495.00 USD**

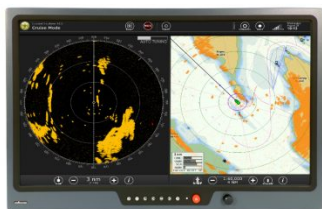
***Model: SVM-2400W-RT-USB***

- 24" Sunlight Readable Marine LCD Monitor
  - 1,000 Nits (Cd/m<sup>2</sup>) High Brightness
  - Widescreen, 16:9 Aspect Ratio
- Full HD 1080p, 1920 x 1080 Max Resolution
  - 9 to 36VDC Power Input
  - NEMA 4, IP65 Sealed Front Panel
- Operates in -10 to +50C temperatures
- VGA, DVI & Composite Video Inputs
  - Front Brightness Controls
  - Picture in Picture Capability
  - Low Power LED Backlighting
- Touch Screen (Resistive Touch Standard)

**The model *SVM-2400W-RT-USB* is now End-of-Life, if you have a requirement please contact us.**



## GALLERY IMAGES



## PRODUCT DESCRIPTION

The Stealth model SVM-2400W is a 24" Marine LCD Monitor that is sunlight readable and ideal for use in direct sunlight or high ambient light conditions. Typical applications would be for marine, industrial, security, kiosks, vehicles or outdoor displays as the LCD's front panel is environmentally sealed to NEMA 4/IP65.

Stealth's SVM-2400W features a front adjustable brightness control knob allowing for the LCD to be adjusted to low levels for night operation and a full 1000 nits for daytime bright sunlight conditions. Front controls also include picture-in-picture, night mode, video inputs, contrast etc. All Stealth monitors are available with touch screen capability or anti-glare glass for maximum protection.

The SVM-2400W operates from 9 to 36VDC which makes it ideal for marine and in vehicle applications. Stealth's 24" widescreen sunlight readable LCD is a Full HD 1080p monitor with 1920 x 1080 maximum resolution (Widescreen, 16:9 Aspect Ratio) and features a wide range of video inputs that include dual VGA and DVI as well as 3 composite (NTSC) RCA input connectors.

Stealth's Marine / All Weather products also include Sealed Waterproof Computers, Sunlight Readable LCD Monitors, Weatherproof Keyboards and Mice.

**ADDITIONAL INFORMATION**

<b>Screen Size</b>	24.0" (Diagonal)
<b>Aspect Ratio</b>	16:9
<b>Native Resolution</b>	1920 x 1080 (Auto sync from 640 x 480 to 1920 x 1080)
<b>Pixel Pitch</b>	0.276mm x 0.276mm
<b>Response Time</b>	25ms
<b>Type</b>	LCD c/w LED Backlighting
<b>Video Input Connectors</b>	2x Analog VGA / HD-15 2x Digital DVI 3x Composite
<b>Touchscreen Interface</b>	1x USB 2.0
<b>Viewing Angle</b>	178° / 178° (H / V) – (Viewing angle of LCD panel sans touch)
<b>Contrast Ratio</b>	3000:1 (typical)
<b>Luminance (Brightness)</b>	1000 cd/m2 typical at center (1000 Nits) (adjustable)
<b>Viewable Image Size</b>	Horizontal: 20.91" / 531.36 mm, Vertical: 11.76" / 298.89 mm
<b>Input</b>	9V – 36V DC Input via Terminal Block Power Consumption: 50W typical (Note: an AC/DC Power Adapter is optional)
<b>Control Buttons (Front mounted)</b>	PIP, Brightness, Night Mode, Down, Menu, Up, Input, Power
<b>Picture In Picture Options (PiP)</b>	Available with Child, Split or Wide Screen.
<b>LCD Mounting Options</b>	Designed for Panel Mount (Flush Mount) VESA 100mm or 75mm mount (Note: VESA mounting not available if external AC/DC power adapter is used)
<b>Environmental Rating</b>	Standard Bezel: NEMA 4 / IP65 Front Panel (when properly installed) protection against windblown dust and rain, splashing water, and hose-directed water

<b>Environmental</b>	Operating Temperature: -10 to 50C (14 to 122 F) Storage Temperature: -20 to 70C (-20 to 158F)
<b>Approvals</b>	Meets ICE 60945 BV Marine and IACS-E10 RoHS
<b>Available Models</b>	SVM-2400W-RT-USB – Resistive Touch with USB Interface
<b>Unit Weight</b>	Unit Weight: 17.19 Pounds (7.8Kg)
<b>Dimensions</b>	23.0"(W) x 14.75"(H) x 2.27"(D) (584.2mm x 374.8mm x 57.7mm)
<b>Warranty</b>	1 Year Parts & Labor