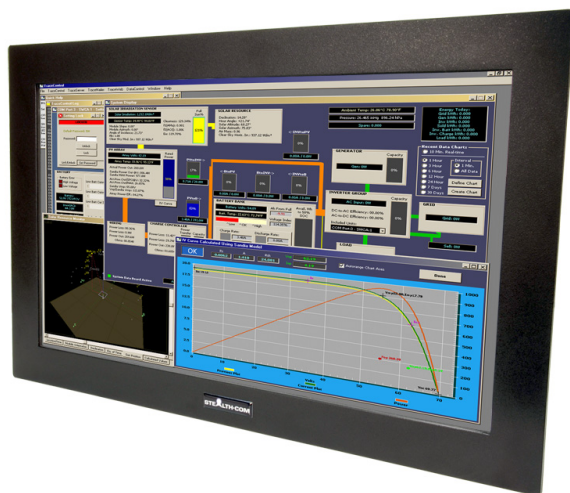


21.5" PANEL MOUNT LCD MONITOR (SV-2151W-PM)



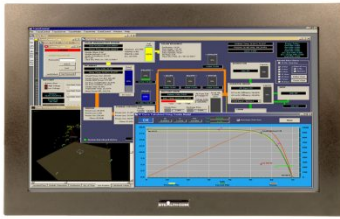
\$2,150.00 USD

Model: SV-2151W-PM

- Panel Mount 21.5" Widescreen LCD Monitor
 - NEMA 4/4X / IP66 Environmentally Sealed
- Resistive Touch Screen c/w USB and Serial Connections
 - 16:9 Aspect Ratio
 - 1920 x 1080 Maximum Resolution
 - 500 Nits of Brightness, Adjustable Controls
- Wide DC Input (12-30V DC) / with Mounted AC Adapter
 - Wide operating temperature (-10C - +50C)
 - DVI-I, HDMI & DisplayPort video connectors
- Stainless Steel & Custom painted bezel options
- UL 62368-1:2019 Ed.3 & CSA C22.2#62368-1:2019 Ed.3 Listed
 - 3 Year Warranty



GALLERY IMAGES



PRODUCT DESCRIPTION

Stealth's 21.5" Panel Mount LCD features a widescreen display and is easily integrated into your enclosure, cabinet, console, wall, kiosks or other industrial applications. Simply refer to the Panel Mount cutout drawing and cut a hole to the size indicated. Drop the LCD in place and secure the brackets for each side. No stud mount holes are required for this LCD monitor.

Stealth's Panel Mount Display comes standard with an environmentally sealed NEMA 4, 4X, IP66 front panel that is resistant to dust/dirt penetration or even liquid splashes. The rugged SV-2151W-PM LCD display comes equipped with a Resistive Touchscreen standard.

Prior to shipping, each and every display is put through Stealth's rigorous QA burn-in procedure that is documented and controlled through our ISO 9001 quality system and in compliance with being UL 62368-1:2019 Ed.3 & CSA C22.2#62368-1:2019 Ed.3 Listed.

Stealth offers a wide range of LCD product offerings that include Panel mount, Rack mount and Open Frame designs as standard off-the-shelf products in 15" up to 24" diagonal sizes. Our LCD products are constructed from solid steel and will meet the demands of your application without breaking your budget.

ADDITIONAL INFORMATION

Bezel Type	Panel Mount
Screen Size	21.5" (Diagonal)
Aspect Ratio	16:9
Native Resolution	1920 x 1080 (Auto sync from 640 x 480 to 1920 x 1080)
Horizontal Frequency	60.0 kHz ~ 83.0 kHz
Vertical Frequency	55.0 kHz ~ 65.0 kHz
Pixel Pitch	0.25mm x 0.25mm
Response Time	14ms Typical
Video Input Connectors	DVI-I HDMI Displayport
Viewing Angle	178° / 178° (H / V) - (Viewing angle of LCD panel sans touch)
Contrast Ratio	1200:1 (typical)
Luminance (Brightness)	500 cd/m2 typical at center (500 Nits)
Viewable Image Size	Horizontal: 18.77" / 476.64mm, Vertical: 10.56" / 268.11mm Standard Bezel: NEMA 4 / IP65 Front Panel (when properly installed) protection against windblown dust and rain, splashing water, and hose-directed water
Environmental Rating	Optional Stainless Steel Bezel: NEMA 4X / IP66 Front Panel (when properly installed) corrosion protection, protection against windblown dust and rain, splashing water, and hose-directed water
Environmental	Operating Humidity: 20% - 80% Storage Temperature: -30C - +85C (-22F - +185F) Operating Temperature: -10 to 50C (14 to 122 F) Storage Humidity: 10% to 85%, non-condensing

Approvals	CSA C22.2#62368-1:2019 Ed.3 UL 62368-1:2019 Ed.3 RoHS CE FCC
Input	100-240V AC, 50/60Hz, 60W rear-mounted (removable) Power Supply DC Input (std.): 12V – 30V DC
Control Buttons (Rear mounted)	Power, Left, Right, Menu
Controls On-Screen Display	Brightness, Contrast, Input Source, Color, Image Adjust, OSD Lockout
Panel Finish	Black Baked Enamel (Standard) Stainless Steel – Brushed #304 (Optional)
Unit Weight	Unit Weight: 18.5 Lbs (8.39 Kg)
Dimensions	Add 1.33" (33.78mm) to depth with rear mounted AC Adapter Panel Mount: 21.95"(W) x 13.8"(H) x 2.75"(D) 557.53mm x 350.52mm x 69.85mm SV-2151W-PM-RT – Standard Bezel (NEMA 4), Resistive Touch w/ Serial/DB9 and USB Interface SV-2151W-PM-RT-SS – Stainless Steel Bezel (NEMA 4X), Resistive Touch w/ USB & Serial/DB9 Interface
Available Models	
Warranty	3 Year Parts and Labor
Disclaimer	Note: Specifications are subject to change without notice.