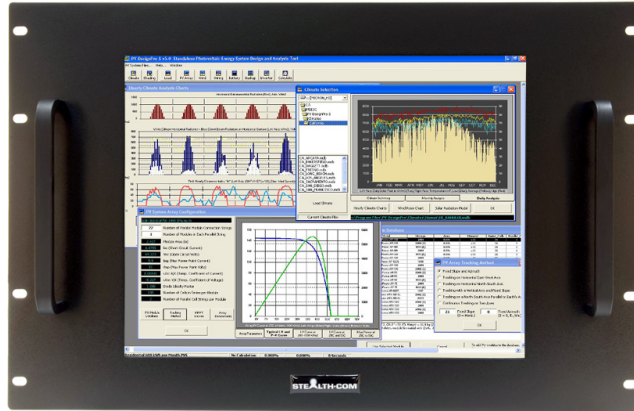


15" RACK MOUNT LCD MONITOR (SV-1505-RM)



\$1,305.00 USD

Model: SV-1505-RM

- Rack Mount LCD, 15" Industrial Grade
- Installs in standard EIA 19" rack cabinets
- Optional Resistive Touch Screen c/w USB and Serial Connections
 - Wide Viewing Angles
- DVI-I, HDMI, DisplayPort video connectors
- UL 62368-1:2019 Ed.3 & CAN/CSA C22.2#62368-1:2019 Ed.3 Listed
 - FCC, CE, RoHS Compliant
 - 3 Year Warranty



GALLERY IMAGES



PRODUCT DESCRIPTION

Stealth builds high quality LCD monitors suited for industrial and commercial applications. Our 15" Rack Mount LCD Monitor is easily installed into industry standard 19" EIA rack cabinets and enclosures in minutes.

The SV-1505-RM rack mount lcd comes equipped without a touch screen and so the lcd is directly exposed by default. An optional Resistive Touch Screen is available.

Prior to shipping, each and every display is put through Stealth's rigorous QA burn-in procedure that is documented and controlled through our ISO 9001 quality system and in compliance with being UL 62368-1:2019 Ed.3 & CAN/CSA C22.2#62368-1:2019 Ed.3 listed.

Stealth offers a range of LCD product offerings including Panel mount, Rack mount and Open Frame designs as standard off-the-shelf products in 15" up to 24" diagonal sizes. Our LCD products are constructed from solid steel and will meet the demands of your application without breaking your budget.

ADDITIONAL INFORMATION

Bezel Type	Rack Mount
Screen Size	15.0" (Diagonal)
Aspect Ratio	4:3
Native Resolution	1024 x 768 (Auto sync from 800 x 600 to 1024 x 768)
Horizontal Frequency	42.9 ~ 58.8KHz (48.363 KHz typical)
Vertical Frequency	55 - 70Hz (60Hz typical)
Pixel Pitch	0.297mm x 0.297mm
Response Time	16ms Rise (Typical) 7ms Fall (Typical)
Type	TFT Active Matrix Liquid Crystal
Video Input Connectors	DVI-I VGA via DVI-VGA Adapter (Included) HDMI Displayport
Viewing Angle	88°/88°/88°/88° (Typical)
Contrast Ratio	2000:1 (typical)
Luminance (Brightness)	300 cd/m2 typical at center (300 Nits)
Viewable Image Size	Horizontal: 11.97" / 304.1 mm, Vertical: 8.98" / 228.1 mm
Input	90 ~ 264V AC, 47~63Hz External Power Supply (rear mounted) DC Input: 9V - 36V DC DC Input: 43V - 160V DC DC Input: 180V - 300V DC AC Adapter is Removable
Control Buttons (Rear mounted)	Power, Left, Right, Menu

Controls On-Screen Display	Brightness
	Color
	Image Adjust
	Input Source
	OSD Lockout
	Sound (not applicable)
Environmental Rating	Tools
	N/A – not rated
Environmental	Operating Temperature: -10C – +60C (14F – 140F)
	Storage Temperature: -30C – +85C (-22F – +185F)
	Operating: Relative Humidity 20% ~ 80%
	Storage Relative Humidity: 20% ~ 80%
Panel Finish	Black Baked Enamel (Standard)
Unit Weight	Unit Weight: 12 Lbs (5.4kg)
Dimensions	Add 1.33" (33.78mm) to depth with rear mounted AC Adapter
	With Touch: 19.00" x 12.22" x 2.30" (305.30mm x 310.38mm x 58.38mm) [W x H x D]
	Without Touch: 19.00" x 12.22" x 2.06" (305.30mm x 310.38mm x 52.38mm) [W x H x D]
	CSA C22.2#62368-1:2019 Ed.3
Approvals	UL 62368-1:2019 Ed.3
	RoHS
	CE
	FCC
Cooling	Natural Convection (no fan)
	SV-1505-RM – Painted Bezel, No touch / no protective glass, 9~36V DC Input, AC Adapter Included
	SV-1505-RM-160V – Painted Bezel, No touch / no protective glass, 43~160V DC Input
	SV-1505-RM-300V – Painted Bezel, No touch / no protective glass, 180~300V DC Input
Available Models	SV-1505-RM-RT – Painted Bezel, Resistive Touch (Serial/DB9 and USB), 9~36V DC Input, AC Adapter Included
	SV-1505-RM-RT-160V – Painted Bezel, Resistive Touch (Serial/DB9 and USB), 43~160V DC Input
	SV-1505-RM-RT-300V – Painted Bezel, Resistive Touch (Serial/DB9 and USB), 180~300V DC Input
Warranty	3 Year Parts and Labor

Disclaimer

Note: Specifications are subject to change without notice.