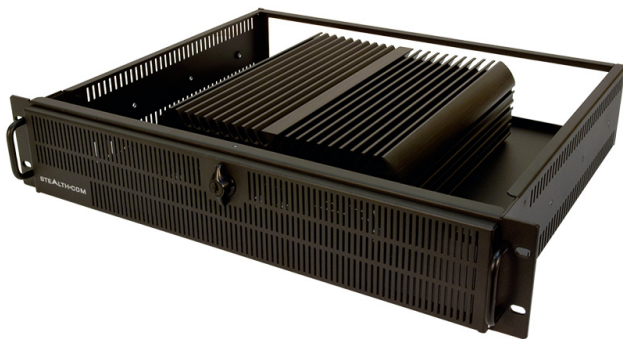


SR-2875 - POWERFUL FANLESS 2U RACKMOUNT SERVER/PC (WIDE RANGE TEMPERATURE)



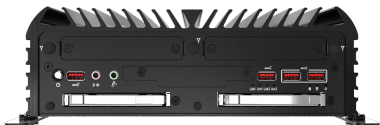
\$3,365.00 USD

Powerful & Versatile Fanless Rack PC

- Fanless, Noise Free Computing
- Space Saving 2U, 3.5" Rack Server/PC
- Powerful Intel's® 10th Generation Core i5, i7, i9 & Xeon mobile processors
 - 8x DIO (Digital input/output) ports
 - Dual Removable Front Drives
- Wide Operating Temp (-25°C to 70°C / -13°F to 158°F)
 - Wide Range 9-48 VDC Input, ideal for mobile/field
- Built-in Gigabit LAN, USB 3.2, Audio, Serial, Video (DVI-I & Displayport)
 - 4K Resolution, Ultra HD, Triple Display support
 - Single/Dual channel CAN Bus (Optional)
 - Solid State Drives (SSD) Standard
 - Windows 10, 11 and Linux
 - UL, CE, FCC & RoHS Certified
 - See our FAQ - Why Choose Fanless?
- Small Form Factor model version also available



GALLERY IMAGES



PRODUCT DESCRIPTION

The Stealth model SR-2875 is a wide temperature powerful fanless 2U Rackmount Server/PC that is easily integrated into standard 19" rack cabinets or used as standalone workstations. It is our latest in innovative Fanless 2U Rackmount Computers/Servers.

The SR-2875 is designed for high performance and is well equipped with Intel's® 10th Generation Core i5, i7, i9 and Xeon mobile processors. It supports operation in temperatures ranging from -25°C – 70°C. Up to 64GB of ECC and non-ECC DDR4 RAM is supported, along with capacity of up to 6TB in solid state drives (SSD) when equipped with 3 drives.

The SR-2875 rack mount computer includes two Removable Front Drive Bays, providing easy drive swapping and optional RAID configurations. The powerful small form factor pc also includes an abundance of I/O ports such as USB 3.2 ports, RS232 COM ports, Gigabit networking, external SIM card sockets for wireless connectivity and audio/video ports.

Stealth's SR-2875 rack pc is designed to handle 4K Ultra HD Resolution video and can support up to three connected displays via DisplayPort and DVI-I video ports. The SR-2875 also features 8x DIO (Digital input/output) with Isolation, offering the advantage of providing electrical isolation of digital signals.

Stealth developed the SR-2875 to be more than just your average server. It is engineered to be extremely mobile application friendly with the inclusion of Wide Range 9-48 VDC power input and to protect the system power is regulated with OVP (Over Voltage Protection), OCP (Over Current Protection) & Reverse Protection.

The SR-2875 is UL, CE, FCC & RoHS certified, and designed for use in a multitude of applications including; Audio/Video recording, Embedded Control, Digital Signs, Interactive Kiosks, Thin-Clients, and Human/Machine Interface.

ADDITIONAL INFORMATION

Processor

Supporting Intel® Core™ 10th Generation Processors
Intel® Core™ i5-10500TE (6 Cores / 12 Threads, up to 3.7Ghz)
Intel® Core™ i7-10700TE (8 Cores / 16 Threads, up to 4.4Ghz)
Intel® Core™ i9-10900TE (10 Cores / 20 Threads, up to 4.5Ghz)
Intel® Xeon® W-1290TE (10 Cores / 20 Threads, up to 4.50Ghz)

BIOS

AMI 256Mbit SPI BIOS

Chipset

Intel® W480E Chipset

Memory

2x DDR4 Memory Sockets Supporting up to 64GB of RAM /
Memory

Optional ECC Memory Support (available for Xeon CPUs only)

Internal Storage

256GB TLC SSD (Solid State Drive) Wide Temp standard (SATA)

Up to 3 x 2.5" SSD supported total (1 x internal, 2 x removable)

Optional Onboard RAID configurations (0, 1, 5), requires multiple
drives

Options of up to 2TB SSD internal storage.

Internal Expansion Option

2 Internal full sized Mini-PCIe expansion slots

Video

Intel® UHD Graphics 630

Includes DVI-I & 2x DisplayPort video ports

Supports 4K Ultra HD Resolution as well as 1080p HD Video

Triple Display support with DisplayPort and DVI-I

Max Resolution, DisplayPort Mode: 4096x2304 @ 60Hz, DVI

Mode: 1920 x 1200 @ 60Hz

LAN1: Intel I219, LAN2: Intel I210

Optional 2/4 x 10G Network connections on Front Panel

Optional 4/8 x 10/100/1000 RJ45 POE Network connections on
Front Panel

Networking

2 onboard Gigabit Ethernet controllers, RJ-45 interface, PXE and
WOL Supported

Optional 802.11 b/g/n/ac Dual Band (2.4Ghz / 5Ghz) Wireless

Networking and Bluetooth 4.0, Realtek® RTL8821AE via internal
Mini-PCIe

Communications

2x External SIM card sockets standard for 4G wireless connectivity
Optional 2x External SIM card sockets in Front Bay for 5G wireless connectivity
4x RS232/422/485 COM ports (standard)
Additional 2/4 RS232 COM ports on Front Panel (optional)
Optional 4/8 x USB 3.0 Ports on Front Panel
Single/Dual channel CAN Bus (optional)

Audio

Integrated Realtek High Definition Audio CODEC ALC888S

Operating Systems

Windows Server 2022
Windows 11 (64-bit)
Windows 10 (64-bit)
Ubuntu Linux
Please contact us directly for any special requirements

TPM Module

TPM 2.0 (Trusted Platform Module), provides increased hardware security.

WatchDog Timer

1 ~ 255 sec/min
System Reset

Hardware Monitor

Processor temperature
Voltage

Chassis Description

2U, 3.5" High, 19" EIA rackmount
Solid Steel Chassis, Black Color
Locking / Latching Secure Front door
Fanless Rugged Aluminum Chassis
Rear locking 5-Pin Power Jack (includes Ignition / Car PC function)
Input is 9V – 48V DC
Power Mode: AT & ATX

Power Input

Includes External AC Adapter, Input 100~240V AC @ 1.4A
50-60Hz
Power Protection: OVP (Over Voltage Protection), OCP (Over Current Protection) & Reverse Protection

Included with System

North American Power Cord
100-240V AC Adapter, 4.75ft cable exit length

Options

5G wireless connectivity w/ 2x External SIM card sockets in Front Bay

2/4x 10Gb Ports on Front Panel

4/8x 10/100/1000 RJ45 POE Network connections on Front Panel

4/8x USB 3.0 Ports on Front Panel

802.11 b/g/n/ac Dual Band (2.4Ghz / 5Ghz) WiFi and Bluetooth, Intel® AC7260 via internal Mini-PCIe

External USB DVD+-RW/CD-RW Drive

4 x USB 3.2 Gen 2 Ports

4 x RS232 COM ports

Rear Panel

2x Gigabit RJ45 Network connection

8x DIO (Digital input/output) with Isolation

1x DVI-I video connector

2x DisplayPort video connectors

9 – 48V DC Connector

2 x Removable SSD Bays

2 x SIM Communications Slots (4G / LTE)

2 x Universal Bays (various I/O Options)

2 x USB 3.2 Gen 1 Ports

2 x USB 3.2 Gen 2 Ports

Front Panel

Car Mode Delay Time Setting Switch

PC/Car Mode Select Switch

Headphone/Audio Line-Out Jack

Microphone Input Jack

AT / ATX Switch

Power-on button

Dimensions

19.0"(W) x 13.94"(D) x 3.468"(H) (482.6 x 354 x 88 mm)

Operating Temperature: -25 to 70C (-13 to 158 F)

Relative Humidity: 10% ~ 95%, non-condensing (Operating & Non-Operating)

Environmental

Shock: 50G, half sine, 11ms (with SSD)

Vibration: 5 Grms, 5 – 500 Hz, 0.5 hr/axis (with SSD)

UL 62368-1 and CSA C22.2 No. 62368-1:19

RoHS

CE

FCC

Approvals

Weight

Note: add 2.8 lbs / 1.25 kg for the AC Adapter

Unit Weight: 18.5 lbs / 8.4 kg (Depending on configuration)

Warranty

2 Year limited Warranty, Standard

1 Year Extended Warranty available (see Configurator/Price List)

Disclaimer

Note: Specifications are subject to change without notice.