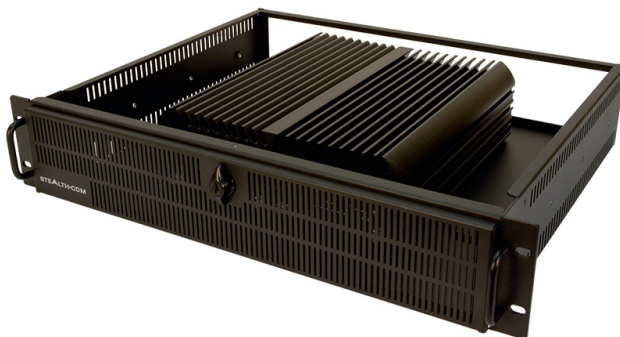


SR-2870 - POWERFUL FANLESS 2U RACKMOUNT SERVER/PC



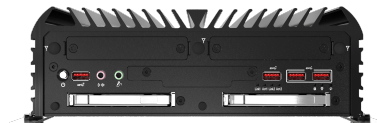
\$3,365.00 USD

Powerful & Versatile Fanless Rack PC

- Fanless, Noise Free Computing
- Space Saving 2U, 3.5" Rack Server/PC
- Powerful Intel's® 10th Generation Core i5, i7, i9 & Xeon mobile processors
 - 8x DIO (Digital input/output) ports
 - Dual Removable Front Drives
- Wide Range 9-48 VDC Input, ideal for mobile/field
- Built-in Gigabit LAN, USB 3.2, Audio, Serial, Video (DVI-I & Display port)
 - 4K Resolution, Ultra HD, Triple Display support
 - Single/Dual channel CAN Bus (Optional)
 - Solid State Drives (SSD) Standard
 - Windows 10, 11 and Linux
 - UL, CE, FCC & RoHS Certified
 - See our FAQ - Why Choose Fanless?
- Small Form Factor model version also available



GALLERY IMAGES



PRODUCT DESCRIPTION

The Stealth model SR-2870 is a powerful fanless 2U Rackmount Server/PC that is easily integrated into standard 19" rack cabinets or used as standalone workstations. It is our latest in innovative Fanless 2U Rackmount Computers/Servers.

The SR-2870 is designed for high performance and is well equipped with Intel's® 10th Generation Core i5, i7, i9 and Xeon mobile processors. Up to 64GB of ECC and non-ECC DDR4 RAM is supported, along with capacity of up to 24TB in solid state drives (SSD) when equipped with 3 drives.

The SR-2870 rack mount computer includes two Removable Front Drive Bays, providing easy drive swapping and optional RAID configurations. The powerful small form factor pc also includes an abundance of I/O ports such as USB 3.2 ports, RS232 COM ports, Gigabit networking, external SIM card sockets for wireless connectivity and audio/video ports.

Stealth's SR-2870 rack pc is designed to handle 4K Ultra HD Resolution video and can support up to three connected displays via DisplayPort and DVI-I video ports. The SR-2870 also features 8x DIO (Digital input/output) with Isolation, offering the advantage of providing electrical isolation of digital signals.

Stealth developed the SR-2870 to be more than just your average server. It is engineered to be extremely mobile application friendly with the inclusion of Wide Range 9-48 VDC power input and to protect the system power is regulated with OVP (Over Voltage Protection), OCP (Over Current Protection) & Reverse Protection.

The SR-2870 is UL, CE, FCC & RoHS certified, and designed for use in a multitude of applications including; Audio/Video recording, Embedded Control, Digital Signs, Interactive Kiosks, Thin-Clients, and Human/Machine Interface.

ADDITIONAL INFORMATION

Processor

Supporting Intel® Core™ 10th Generation Processors
Intel® Core™ i5-10500TE (6 Cores / 12 Threads, up to 3.7Ghz)
Intel® Core™ i7-10700TE (8 Cores / 16 Threads, up to 4.4Ghz)
Intel® Core™ i9-10900TE (10 Cores / 20 Threads, up to 4.5Ghz)
Intel® Xeon® W-1290TE (10 Cores / 20 Threads, up to 4.50Ghz)

BIOS

AMI 256Mbit SPI BIOS

Chipset

Intel® W480E Chipset

Memory

2x DDR4 Memory Sockets Supporting up to 64GB of RAM /
Memory
Optional ECC Memory Support (available for Xeon CPUs only)

Internal Storage

480GB 3D NAND SSD (Solid State Drive) standard (SATA)
Options of up to 8TB SSD internal storage.
Up to 3 x 2.5" SSD supported total (1 x internal, 2 x removable)
Optional Onboard RAID configurations (0, 1, 5), requires multiple
drives

Internal Expansion Option

2 Internal full sized Mini-PCIe expansion slots

Video

Intel® UHD Graphics 630
Includes DVI-I & 2x DisplayPort video ports
Supports 4K Ultra HD Resolution as well as 1080p HD Video
Triple Display support with DisplayPort and DVI-I
Max Resolution, DisplayPort Mode: 4096x2304 @ 60Hz, DVI
Mode: 1920 x 1200 @ 60Hz

Networking

LAN1: Intel I219, LAN2: Intel I210
Optional 2/4 x 10G Network connections on Front Panel
Optional 4/8 x 10/100/1000 RJ45 POE Network connections on
Front Panel
2 onboard Gigabit Ethernet controllers, RJ-45 interface, PXE and
WOL Supported
Optional 802.11 b/g/n/ac Dual Band (2.4Ghz / 5Ghz) Wireless
Networking and Bluetooth 4.0, Realtek® RTL8821AE via internal
Mini-PCIe

Communications

2x External SIM card sockets standard for 4G wireless connectivity
Optional 2x External SIM card sockets in Front Bay for 5G wireless connectivity
4x RS232/422/485 COM ports (standard)
Additional 2/4 RS232 COM ports on Front Panel (optional)
Optional 4/8 x USB 3.0 Ports on Front Panel
Single/Dual channel CAN Bus (optional)

Audio

Integrated Realtek High Definition Audio CODEC ALC888S

Operating Systems

Windows Server 2022
Windows 11 (64-bit)
Windows 10 (64-bit)
Ubuntu Linux
Please contact us directly for any special requirements

TPM Module

TPM 2.0 (Trusted Platform Module), provides increased hardware security.

WatchDog Timer

1 ~ 255 sec/min
System Reset

Hardware Monitor

Processor temperature
Voltage

Chassis Description

2U, 3.5" High, 19" EIA rackmount
Solid Steel Chassis, Black Color
Locking / Latching Secure Front door
Fanless Rugged Aluminum Chassis
Rear locking 5-Pin Power Jack (includes Ignition / Car PC function)
Input is 9V – 48V DC
Power Mode: AT & ATX

Power Input

Includes External AC Adapter, Input 100~240V AC @ 1.4A
50-60Hz
Power Protection: OVP (Over Voltage Protection), OCP (Over Current Protection) & Reverse Protection

Included with System

North American Power Cord
100-240V AC Adapter, 4.75ft cable exit length
4 x USB 3.2 Gen 2 Ports
4 x RS232 COM ports

Rear Panel

2x Gigabit RJ45 Network connection
8x DIO (Digital input/output) with Isolation
1x DVI-I video connector
2x DisplayPort video connectors
9 – 48V DC Connector

Front Panel

2 x Removable SSD Bays
2 x SIM Communications Slots (4G / LTE)
2 x Universal Bays (various I/O Options)
2 x USB 3.2 Gen 1 Ports
2 x USB 3.2 Gen 2 Ports
Car Mode Delay Time Setting Switch
PC/Car Mode Select Switch
Headphone/Audio Line-Out Jack
Microphone Input Jack
AT / ATX Switch
Power-on button

Dimensions

19.0"(W) x 13.94"(D) x 3.468"(H) (482.6 x 354 x 88 mm)

Operating Temperature: 0 – 40C (32 to 104 F)

Environmental

Relative Humidity: 10% ~ 95%, non-condensing (Operating & Non-Operating)

Shock: 50G, half sine, 11ms (with SSD)

Vibration: 5 Grms, 5 – 500 Hz, 0.5 hr/axis (with SSD)

UL 62368-1 and CSA C22.2 No. 62368-1:19

Approvals

RoHS

CE

FCC

Weight

Note: add 2.8 lbs / 1.25 kg for the AC Adapter

Unit Weight: 18.5 lbs / 8.4 kg (Depending on configuration)

Warranty

2 Year limited Warranty, Standard

1 Year Extended Warranty available (see Configurator/Price List)

Disclaimer

Note: Specifications are subject to change without notice.