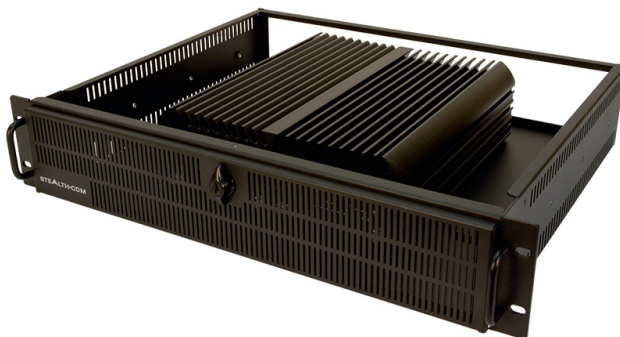


SR-2860 - POWERFUL FANLESS 2U RACKMOUNT SERVER/PC



\$2,485.00 USD

Powerful & Versatile Fanless Rack PC

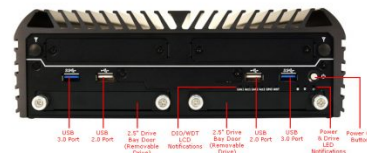
- Fanless, Noise Free Computing
- Space Saving 2U, 3.5" Rack Server/PC
- Powerful Intel's® 6th and 7th generation Core™ i5 & i7 mobile processors
 - 8x DIO (Digital input/output) ports
 - Dual Removable Front Drives
- Wide Range 9-48 VDC Input, ideal for mobile/field
- Built-in Gigabit LAN, USB 3.0/2.0, Audio, Serial, Video (DVI-I & Displayport)
 - 4K Resolution, Ultra HD, Triple Display support
 - Solid State Drives (SSD) Standard
 - Windows 10, Server 2022 and Linux
 - See our FAQ - Why Choose Fanless?
- Small Form Factor model version also available



GALLERY IMAGES



SR-2860 Front View



PRODUCT DESCRIPTION

The Stealth model SR-2860 is a powerful fanless 2U Rackmount Server/PC that is easily integrated into standard 19" rack cabinets or used as standalone workstations.

The SR-2860 is designed for high performance is well equipped with Intel's® 6th and 7th generation Core™ i5 & i7 mobile processors, supporting up to 32GB of DDR4 RAM and capacity of up to 8TB in solid state drives(SSD) when equipped with 4 internal drives.

This SR-2860 rack mount computer includes, two Removable Front Drive Bays, providing easy drive swapping and optional RAID configurations. The powerful small form factor pc also includes an abundance of I/O ports such as USB 3.0/2.0 ports, RS232 COM ports, Gigabit networking, external SIM card sockets for wireless connectivity and audio/video ports.

Stealth's SR-2860 rack pc is designed to handle 4K Ultra HD Resolution video and can support up to three connected displays via DisplayPort and DVI-I video ports. The SR-2860 also features 8x DIO (Digital input/output) with Isolation, offering the advantage of providing electrical isolation of digital signals.

Stealth developed the SR-2860 to be more than just your average server, it engineered to be extremely mobile application friendly with the inclusion of Wide Range 9-48 VDC power input and to protect the system the power is regulated with OVP (Over Voltage Protection), OCP (Over Current Protection) & Reverse Protection.

The SR-2860 is designed for use in a multitude of applications including; Audio/Video recording, Embedded Control, Digital Signs, Interactive Kiosks, Thin-Clients, and Human/Machine Interface.

ADDITIONAL INFORMATION

Processor

Intel® Core™ i7-7700T (4 Cores / 8 Threads, up to 3.80Ghz)
Supporting Intel® 6th Gen Core™ Processor i5-6500TE, Quad
Core, 6MB Cache, up to 3.3 GHz (standard)
Optional Intel® 6th Gen Core™ Processor i7-6700TE , Quad
Core, 8MB Cache, up to 3.4 GHz

BIOS

AMI 128Mbit SPI BIOS

Chipset

Intel® Q170 Express Chipset

Memory

2x DDR4 Memory Sockets Supporting up to 32GB of RAM /
Memory

Internal Storage

256GB 3D NAND SSD (Solid State Drive) standard (SATA)
Options of up to 1TB SSD internal storage.
Optional Onboard RAID configurations (0, 1, 5, 10), requires
multiple drives

Internal Expansion Option

4 Internal full sized Mini-PCIe expansion slots

Video

Integrated Intel HD Graphics 530
Includes DVI-I (DVI-D Signaling) & 2x DisplayPort video ports
Supports 4K Ultra HD Resolution as well as 1080p HD Video
Triple Display support with DisplayPort and DVI-I
Max Resolution, DisplayPort Mode: 4096x2304 @ 60Hz, DVI
Mode: 1920 x 1200 @ 60Hz
2 onboard Gigabit Ethernet controllers, RJ-45 interface, PXE and
WOL Supported

Networking

LAN1: Intel I210-AT, LAN2: Intel I219LM
Optional 4 x 10/100/1000 RJ45 POE Network connections on
Front Panel
Optional 802.11 b/g/n/ac Dual Band (2.4Ghz / 5Ghz) Wireless
Networking and Bluetooth 4.0, Realtek® RTL8821AE via internal
Mini-PCIe

Communications

2x External SIM card sockets for wireless connectivity

Audio

Integrated Realtek High Definition Audio CODEC ALC888S

Operating Systems

Windows Server 2022

Windows 10 (64-bit)

Windows 7 (32 and 64-bit)

Ubuntu Linux

Please contact us directly for any special requirements

TPM Module

fTPM 2.0 (Firmware Trusted Platform Module), provides increased hardware security.

WatchDog Timer

1 ~ 255 sec/min

System Reset

Hardware Monitor

Processor temperature

Voltage

Chassis Description

2U, 3.5" High, 19" EIA rackmount

Solid Steel Chassis, Black Color

Locking / Latching Secure Front door

Fanless Rugged Aluminum Chassis

Input is 9V - 48V DC

Power Mode: AT & ATX

Power Input

Rear Locking 3-Pin power Jack ideal for mobile applications

Includes External AC Adapter, Input 100~240V AC @ 1.4A
50-60HzPower Protection: OVP (Over Voltage Protection), OCP (Over
Current Protection) & Reverse Protection**Included with System**

North American Power Cord

100-240V AC Adapter, 4.75ft cable exit length

802.11 b/g/n/ac Dual Band (2.4Ghz / 5Ghz) WiFi and Bluetooth,

Options

Intel® AC7260 via internal Mini-PCIe

Remote power option Ideal for OEM or Cabinet manufacturers

External USB DVD+-RW/CD-RW Drive

DVI-I video connector (DVI-D signaling)

2x RS232 COM port

2x Gigabit RJ45 Network connection

8x DIO (Digital input/output) with Isolation

Rear Panel

Audio Line-Out Jack

Microphone Input Jack

4 x USB 3.0 Ports

2x DisplayPort video connectors

9 - 48V DC Connector

2 x USB 3.0 Port

Front Panel

2 x USB 2.0 Ports

AT / ATX Switch

Power-on button

Dimensions	19.0"(W) x 13.94"(D) x 3.468"(H) (482.6 x 354 x 88 mm) Operating Temperature: 0 - 40C (32 to 104 F) Relative Humidity: 10% ~ 95%, non-condensing (Operating & Non-Operating)
Environmental	Shock: 50G, half sine, 11ms (with SSD) Vibration: 5 Grms, 5 - 500 Hz, 0.5 hr/axis (with SSD) Vibration: 1 Grms, 5 - 500 Hz, 0.5 hr/axis (with HDD)
Approvals	RoHS
Weight	Unit Weight: 16.25 lbs / 7.37 kg (depending on configuration)
Warranty	2 Year limited Warranty, Standard 1 Year Extended Warranty available (see Configurator/Price List)
Disclaimer	Note: Specifications are subject to change without notice.