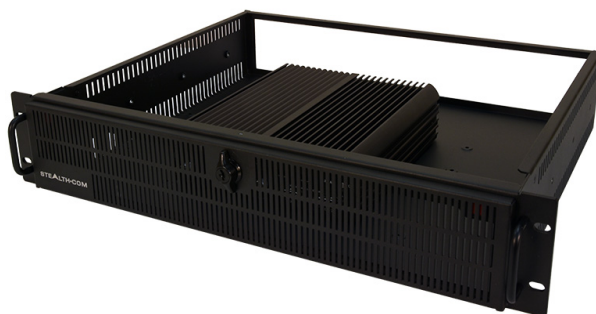


SR-28451 - WIDE TEMPERATURE FANLESS 2U RACKMOUNT PC - SINGLE SYSTEM



\$2,990.00 USD

A Powerful Fanless Rack Solution

- Fanless, Noise Free Computing
- Space Saving 2U, 3.5" Rack Server/PC
- Powerful Intel's® 10th Generation Core i5, i7 & i9 mobile processors
 - 8x DIO (Digital input/output) ports
- Single Removable Front Drive, Single Internal Drive
- Wide Operating Temp (-25°C to 70°C / -13°F to 158°F)
 - Wide Range 9-48 VDC Input, ideal for mobile/field
- Built-in 2.5Gb LAN, USB 3.2, Audio, Serial, Video (Display port x 3)
 - 4K Resolution, Ultra HD, Triple Display support
 - Single/Dual channel CAN Bus (Optional)
 - Solid State Drives (SSD) Standard
 - Windows 10, 11 and Linux
 - UL, CE, FCC & RoHS Certified
 - See our FAQ - Why Choose Fanless?
 - Dual System Option also available



GALLERY IMAGES



PRODUCT DESCRIPTION

Stealth's SR-28451 wide temperature Fanless Rack Server/PC is a single system built into a slim 3.5" high (2U) rack mountable steel chassis with locking/latching front door. It is also available in a dual configuration.

Operational in temperatures ranging from -25°C – 70°C, the noise free fanless design provides a high-performance solution that uses powerful Intel 10th Gen Core i5, i7 and i9 Mobile Processors without the need for noisy cooling fans that can draw in dust and potentially cause catastrophic failures. Up to 64GB of DDR4 RAM is supported, along with 4TB in solid state drives (SSD) when equipped with 2 drives total.

Raid 0/1 options are available for multiple drive configurations. The space saving design features a rugged extruded aluminum chassis that provides superior heat dissipation.

Stealth's SR-28451 Fanless Rack PC is designed to handle 4K Ultra HD Resolution video and can support up to three displays via Display Ports. An abundance of I/O ports includes USB 3.2, RS232 Serial, Gigabit networking, external SIM card sockets for 4G wireless connectivity, audio and 8x DIO (Digital input/output) ports with electrical isolation of digital signals. Port expansion is available via single or dual-channel CAN Bus or by including any of the optional 10GB LAN, RJ45 PoE or USB 3.0 ports in the Universal Bay. The inclusion of a 9-48 VDC power input with Over Voltage, Over Current and Reverse Polarity Protection, along with optional 5G communications makes the SR-28451 extremely mobile friendly.

The SR-28451 is UL, CE, FCC & RoHS certified, and designed for use in a multitude of applications including; Transportation, IoT, IIoT, Audio/Video recording, Embedded Control, Digital Signs, Interactive Kiosks, Thin-Clients, and Human/Machine Interface.

ADDITIONAL INFORMATION

Processor

Supporting Intel® Core™ 10th Generation Processors
Intel® Core™ i5-10500TE (6 Cores / 12 Threads, up to 3.7Ghz)
Intel® Core™ i7-10700TE (8 Cores / 16 Threads, up to 4.4Ghz)
Intel® Core™ i9-10900TE (10 Cores / 20 Threads, up to 4.5Ghz)

BIOS

AMI 256Mbit SPI BIOS

Chipset

Intel® Q470E Express Chipset

Memory

2x DDR4 Memory Sockets Supporting up to 64GB of RAM /
Memory

Internal Storage

256GB TLC SSD (Solid State Drive) Wide Temp standard (SATA)
Options of up to 2TB SSD (Wide Temperature) internal storage
Up to 2 x 2.5" SSD supported total (1 x internal, 1 x removable)
Optional Onboard RAID configurations (0, 1), requires multiple
drives

Internal Expansion Option

(1) M.2 E-key, 2230
1 Internal full sized Mini-PCIe expansion slot
Triple Display support with 3x DisplayPort (1x DP Port co-layout
HDMI connector)

Video

Intel® UHD Graphics 630
Supports 4K Ultra HD Resolution as well as 1080p HD Video
1 onboard 2.5Gb Ethernet controller, RJ-45 interface, PXE and
WOL Supported
1 onboard Gigabit Ethernet controller, RJ-45 interface, PXE and
WOL Supported

Networking

LAN1: Intel I219, LAN2: Intel I225
Optional 2x 10G RJ45 Ports with Intel X710 on Front Panel
Optional 4x 10/100/1000 RJ45 POE Ports with Intel I350 on Front
Panel
Optional 802.11 b/g/n/ac Dual Band (2.4Ghz / 5Ghz) Wireless
Networking and Bluetooth 4.0, Realtek® RTL8821AE via internal
Mini-PCIe

Communications

2x External SIM card sockets standard for 4G wireless connectivity
Optional 2x External SIM card sockets in Front Bay for 5G wireless connectivity
5x RS232/422/485 COM ports (standard)
Optional 4x USB 3.0 Ports on Front Panel
Single/Dual channel CAN Bus (optional)

Audio

Integrated Realtek High Definition Audio CODEC ALC888S

Operating Systems

Windows 11 (64-bit)
Windows 10 (64-bit)
Windows Server 2019
Ubuntu Linux
Please contact us directly for any special requirements

TPM Module

Trusted Platform Module (TPM) 1.2, provides increased hardware security.

WatchDog Timer

1 ~ 255 sec/min
System Reset

Hardware Monitor

Processor temperature
Voltage

Chassis Description

2U, 3.5" High, 19" EIA rackmount
Solid Steel Chassis, Black Color
Locking / Latching Secure Front door
Fanless Design
Rear locking 3-Pin Power Jack (includes Ignition / Car PC function)
Input is 9V – 48V DC

Power Input

Power Mode: AT & ATX
Includes External AC Adapter, Input 100~240V AC @ 1.4A
50-60Hz
Power Protection: OVP (Over Voltage Protection), OCP (Over Current Protection) & Reverse Protection

Included with System

North American Power Cord
* NOTE: Subject to change without notice
100-240V AC Adapter, 4.75ft cable exit length

Options

5G wireless connectivity w/ 2x External SIM card sockets in Front Bay

2x 10Gb Ports on Front Panel

4x 10/100/1000 RJ45 POE Ports on Front Panel

4x USB 3.0 Ports on Front Panel

802.11 b/g/n/ac Dual Band (2.4Ghz / 5Ghz) WiFi and Bluetooth, Intel® AC7260 via internal Mini-PCIe

External USB DVD+-RW/CD-RW Drive

1x 2.5Gb RJ45 Network connection

1x DP/HDMI video connector

2x USB 3.2 Gen 2 Ports

3x RS232 COM ports

Rear Panel

Car Mode Delay Time Setting Switch

1x Gigabit RJ45 Network connection

8x DIO (Digital input/output) with Isolation

2x DisplayPort video connectors

9 - 48V DC Connector

2 x SIM Communications Slots (4G / LTE)

PC/Car Mode Select Switch

1x Removable SSD Bay

1x Universal Bay (various I/O Options)

2x RS232 COM ports

Front Panel

4x USB 3.2 Gen 2 Ports

Clear CMOS

Remote Power Connector

Headphone/Audio Line-Out Jack

AT / ATX Switch

Power-on button

Dimensions

19.0"(W) x 13.94"(D) x 3.468"(H) (482.6 x 354 x 88 mm)

Operating Temperature: -25 to 70C (-13 to 158 F)

Relative Humidity: 10% ~ 95%, non-condensing (Operating & Non-Operating)

Environmental

Shock: 50G, half sine, 11ms (with SSD)

Vibration: 5 Grms, 5 - 500 Hz, 0.5 hr/axis (with SSD)

UL 62368-1 and CSA C22.2 No. 62368-1:19

RoHS

Approvals

CE

FCC

Weight

35lbs / 15.88kg depending on configuration

Warranty

2 Year limited Warranty, Standard

1 Year Extended Warranty available (see Configurator/Price List)

Disclaimer

Note: Specifications are subject to change without notice.