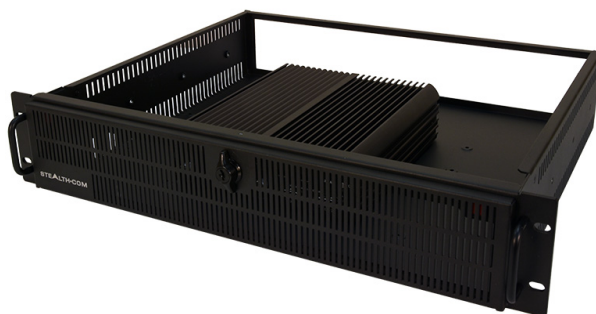


SR-28301 - FANLESS 2U RACKMOUNT PC - SINGLE SYSTEM (DISCONTINUED)



A Powerful Fanless Rack Solution

- Fanless, Noise Free Computing
- Space Saving 2U, 3.5" Rack Server/PC
- Powerful Intel 5th Gen Core i5 or i7 Mobile Processor
 - 4x DIO (Digital input/output) ports
 - Removable Front Drive Bay
- Wide Range 9-48 VDC Input, ideal for mobile/field
 - Solid State Drives (SSD) Standard
 - Windows 7, 8.1, 10 and Linux
 - Dual System Option in same space
- Wide Temperature Version also available

(Important Notice: The SR-28301 model is now end of life and is replaced by the functional equivalent model SR-2860.)



GALLERY IMAGES



PRODUCT DESCRIPTION

Fanless by design, Stealth's fanless high performance Rack PC is available in single or dual system designs all built-in to a slim 3.5" high (2U) rack mountable steel chassis with locking front door.

Stealth's SR-28301 is a noise free rackmount Server/PC equipped with a powerful Intel 5th Gen Core i7 Mobile Processor and is equipped with 128GB solid state drive(SSD), upgradeable to 1TB, as well as 4GB of RAM - upgradeable to 8GB.

Stealth's fanless system operates without noisy cooling fans that can draw in dirt and dust causing potentially catastrophic failures. The space saving design features a rugged extruded aluminum chassis that provides superior heat dissipation. See our FAQ - Why Choose Fanless?

The SR-28301 has an abundance of ports; 4x DIO (Digital input/output) with Isolation, offering the advantage of providing electrical isolation of digital signals. Also included are USB 3.0/2.0 ports, RS232 COM ports, Gigabit networking and audio/video ports. Along with the high number of ports, the SR-28301 houses a Removable Front Drive Bay, providing easy drive swapping and making customization a breeze.

The SR-28301 fanless rack mount computer is RoHS, CE & FCC certified, and designed for use in a multitude of applications including; Audio/Video recording, Embedded Control, Digital Signs, Interactive Kiosks, Thin-Clients, and Human/Machine Interface.

ADDITIONAL INFORMATION

Processor

Supporting Intel® 5th Gen Core™ Processor i5-5350U, Dual Core, 3MB Cache, up to 2.9 GHz (standard)
Optional Intel® 5th Gen Core™ Processor i7-5650U, Dual Core, 4MB Cache, up to 2.2 GHz

BIOS

AMI 128Mbit SPI BIOS

Chipset

SoC integrated

Memory

4GB DDR3L SO-Dimm RAM (standard), option of 8GB available

Internal Storage

Includes 1 Internal Drive Bay
Includes 1 Removable Drive Bay
256GB 3D NAND SSD (Solid State Drive) standard (SATA)
Options of up to 1TB SSD internal storage.
Optional Onboard RAID configurations (0, 1), requires multiple drives

Internal Expansion Option

2 Internal full sized Mini-PCIe expansion slots

Video

Integrated Intel HD Graphics 6000
Includes DVI-I & DisplayPort video ports
Triple Display support with DisplayPort and DVI-I
Max Resolution, DisplayPort Mode: 3840x2160 @ 60Hz, DVI Mode: 1920 x 1200 @ 60Hz
2 onboard Gigabit Ethernet controllers, RJ-45 interface, PXE and WOL Supported

Networking

LAN1: Intel I210-AT, LAN2: Intel I218-LM
Optional 4 x 10/100/1000 RJ45 POE Network connections on Front Panel
Optional 802.11 b/g/n/ac Dual Band (2.4Ghz / 5Ghz) Wireless Networking and Bluetooth 4.0, Realtek® RTL8821AE via internal Mini-PCIe

Communications

2x External SIM card sockets for wireless connectivity

Audio

Integrated Realtek High Definition Audio CODEC ALC888S

Operating Systems

Windows 10 (64-bit)
Windows Server 2019
Windows 7 (32 and 64-bit)
Windows 8.1 (32 and 64-Bit)
Windows Server 2016

Ubuntu Linux

Please contact us directly for any special requirements

TPM Module

Trusted Platform Module (TPM) 1.2, provides increased hardware security.

WatchDog Timer

1 ~ 255 sec/min
System Reset

Hardware Monitor

Processor temperature
Voltage

Chassis Description

2U, 3.5" High, 19" EIA rackmount
Solid Steel Chassis, Black Color
Locking / Latching Secure Front door
Fanless Design

Power Input

Input is 9V - 48V DC
Power Mode: AT & ATX
Rear Locking 3-Pin power Jack ideal for mobile applications
Includes External AC Adapter, Input 100~240V AC @ 1.4A
50-60Hz
Power Protection: OVP (Over Voltage Protection), OCP (Over Current Protection) & Reverse Protection

Included with System

North American Power Cord
* NOTE: Subject to change without notice
100-240V AC Adapter, 4.75ft cable exit length

Options

802.11 b/g/n/ac Dual Band (2.4Ghz / 5Ghz) WiFi and Bluetooth,
Intel® AC7260 via internal Mini-PCIe
External USB DVD+-RW/CD-RW Drive

Rear Panel

2x RS232 COM port
2x Gigabit RJ45 Network connection
4x DIO (Digital input/output) with Isolation
Audio Line-Out Jack
Microphone Input Jack
2 x USB 3.0 Ports
2 x USB 2.0 Ports
1x DVI-I video connector
1x DisplayPort video connector
9 - 48V DC Connector

Front Panel

4 x 10/100/1000 RJ45 POE Network connections (optional)
4 x USB 2.0 Ports
2 x RS232 COM port
AT / ATX Switch
Power-on button

Dimensions

19.0"(W) x 13.94"(D) x 3.468"(H) (482.6 x 354 x 88 mm)

Environmental

Operating Temperature: 0 – 40C (32 to 104 F)
Relative Humidity: 10% ~ 95%, non-condensing (Operating & Non-Operating)
Shock: 50G, half sine, 11ms (with SSD)
Vibration: 5 Grms, 5 – 500 Hz, 0.5 hr/axis (with SSD)
Vibration: 1 Grms, 5 – 500 Hz, 0.5 hr/axis (with HDD)

Approvals

RoHS
CE
FCC

Weight

Unit Weight: 4.58 lbs / 2.08 KG

Warranty

2 Year limited Warranty, Standard
1 Year Extended Warranty available (see Configurator/Price List)

Disclaimer

Note: Specifications are subject to change without notice.