

The information in this guide may change without notice. The manufacturer assumes no responsibility for any errors that may appear in this guide.

Ethernet is a trademark of XEROX Corporation. Microsoft, Windows and Windows logo are trademarks of Microsoft Corporation.

Copyright 2003, Manufacturer. All right reserved. No Part of the contents of this guide maybe transmitted or reproduced in any form or by any means without the written permission of manufacturer. Printed in Taiwan.

The revision date for this guide is **Mar. 3st, 2004**

FCC Statement

This product has been tested and found to comply with the limits for a Class B digital device pursuant to Part 15 of FCC Rules. These limits are designed to provide reasonable protection against such interference when operating in a commercial environment. This equipment generates, uses and can radiate radio frequency energy, and if not installed and used according to the instructions, may cause harmful interference to radio communications.

Operation of this equipment in a residential area is likely to cause interference in which case the user, at his or her own expense will be required to take whatever measures may be required to correct the interference.

CE Mark Warning

This is a Class B product. In a domestic environment, this product may cause radio interference in which case the user may be required to take adequate measures.

1. Introduction

Thank you for purchasing our 802.11g Wireless Cardbus/PCI/PCI/PCI Network Adapter. This user guide is aimed at easy installation procedures of this device. Before your installation to your computer, please read the following procedures carefully.

This is a Wireless Cardbus/PCI Network Adapter, which provides you the most reliable and fastest way to access a wireless network. This product can be operated in Ad-Hoc (peer-to-peer mode or without an Access Point) and infrastructure (with an Access Point) network configuration.

1.1 Package Contents

The package contains the following:

- One Wireless Cardbus/PCI Network Adapter
- One Wireless Cardbus/PCI Network Adapter Driver & Utility plus User's Guide CD-ROM

2. Installation

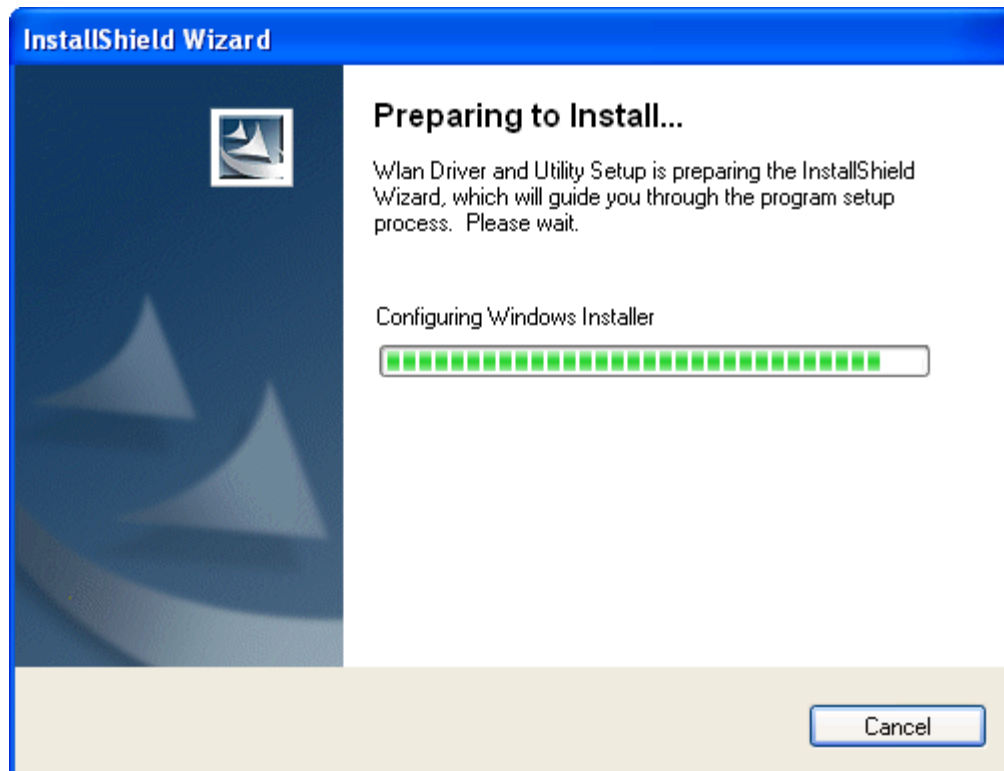
2.1 Getting Started

You may complete the following steps to install your Wireless Cardbus/PCI Network Adapter when you have all the information mentioned above on hand. First, you have to install software (Utility) and then insert the Wireless Cardbus/PCI Network Adapter to your system, and finally set the network properties to accommodate resource sharing the select the type of wireless network that you wish to install.

Note: In the Windows XP system, there are two ways to configure the utility. If you wish to use the Windows XP built-in utility, click **Start→Settings→Control Panel→Administrative Tools→Services→ Wireless Zero Configuration**. Click with right key of mouse, and then select **Start**. The Windows XP built-in utility will lead you to configure. If you wish to use the adapter built-in utility, follow the same step, and select **Stop**.

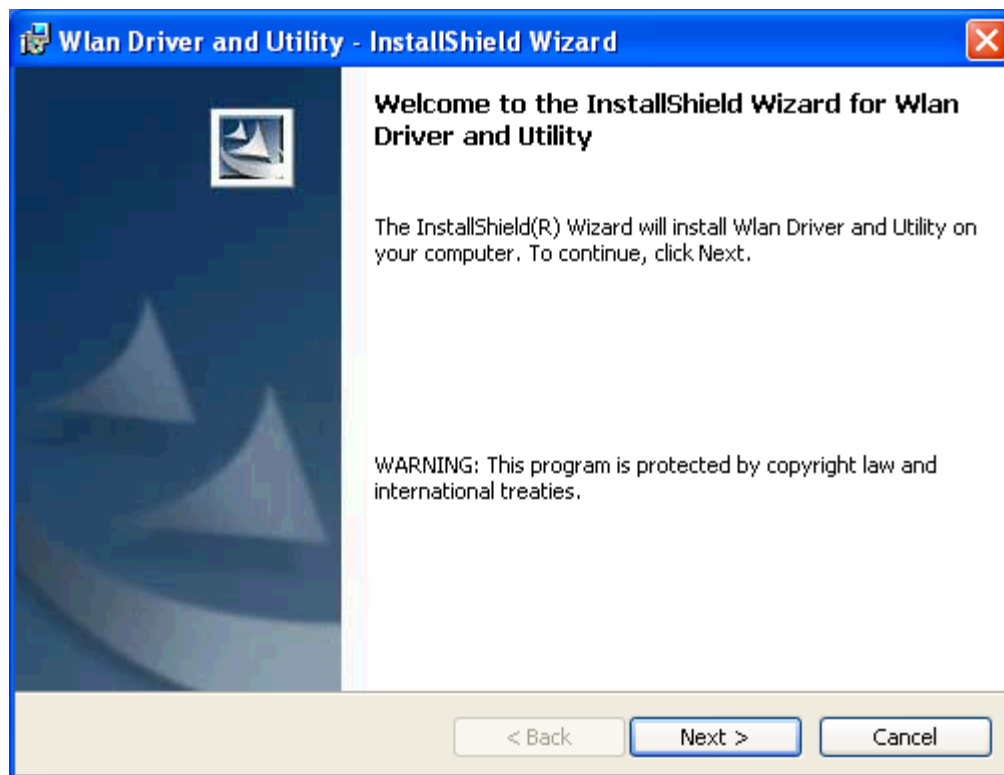
Step 1. Insert the Wireless Cardbus/PCI Network Adapter Driver & Utility CD-ROM into your CD-ROM drive. The InstallShield Wizard will run for preparing to install.

Figure 2.1



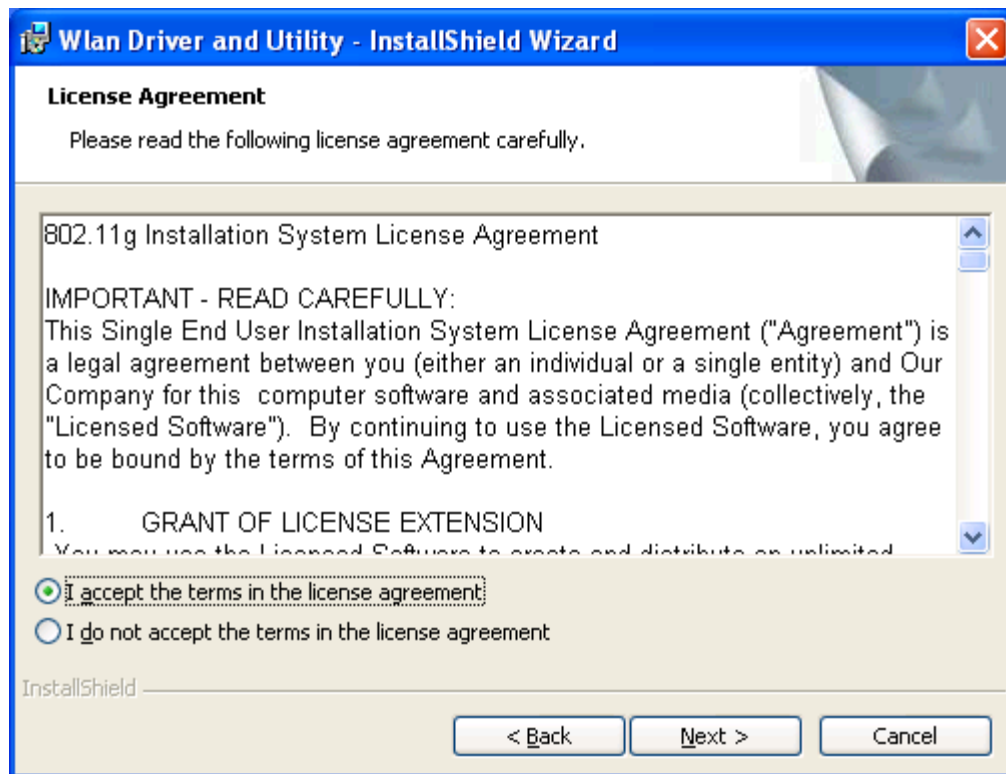
Step 2. The Wireless Cardbus/PCI Network Adapter Driver and Utility – Install Shield Wizard will appear. Click **Next** to proceed.

Figure 2.2



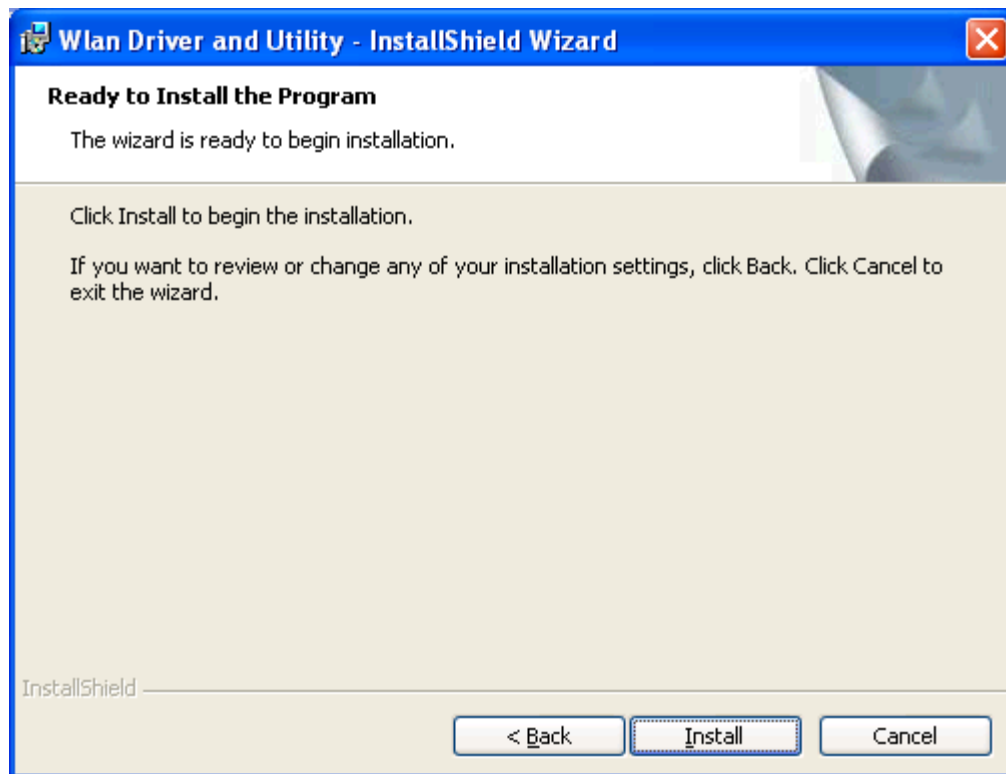
Step 3. The License Agreement will appear. Click on *I accept the terms in the license agreement*, and **Next** to proceed.

Figure 2.3



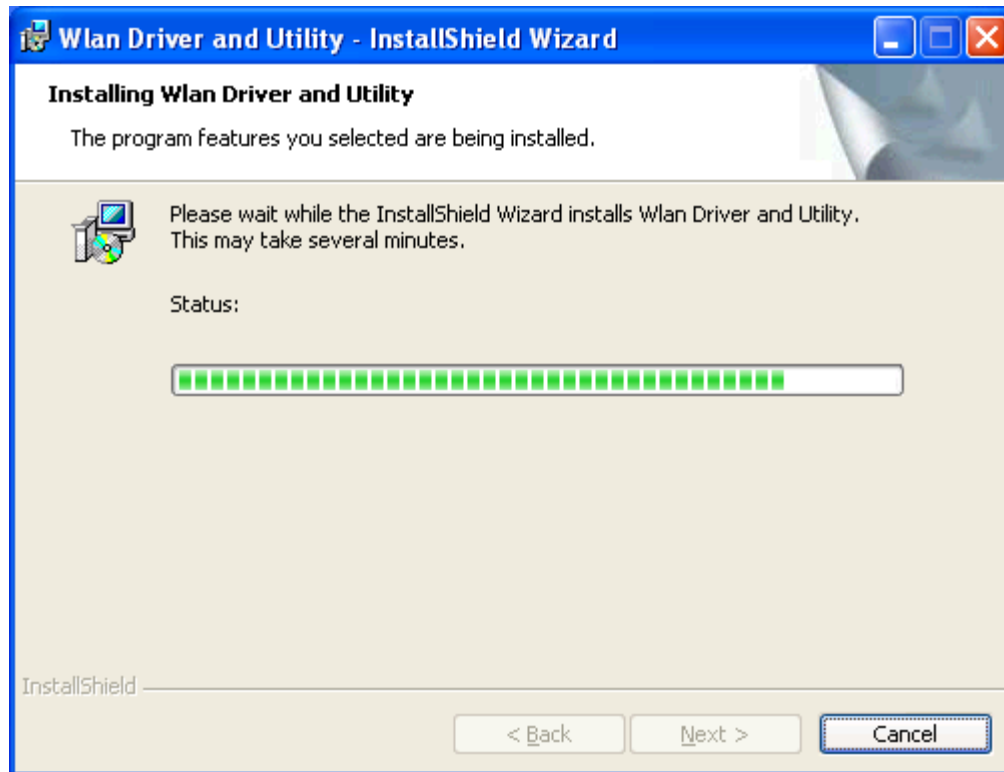
Step 4. Now the Wizard is ready to install the program. Click **Install** to perform this step.

Figure 2.4



Step 5. It might take a few minutes to run the installation.

Figure 2.5



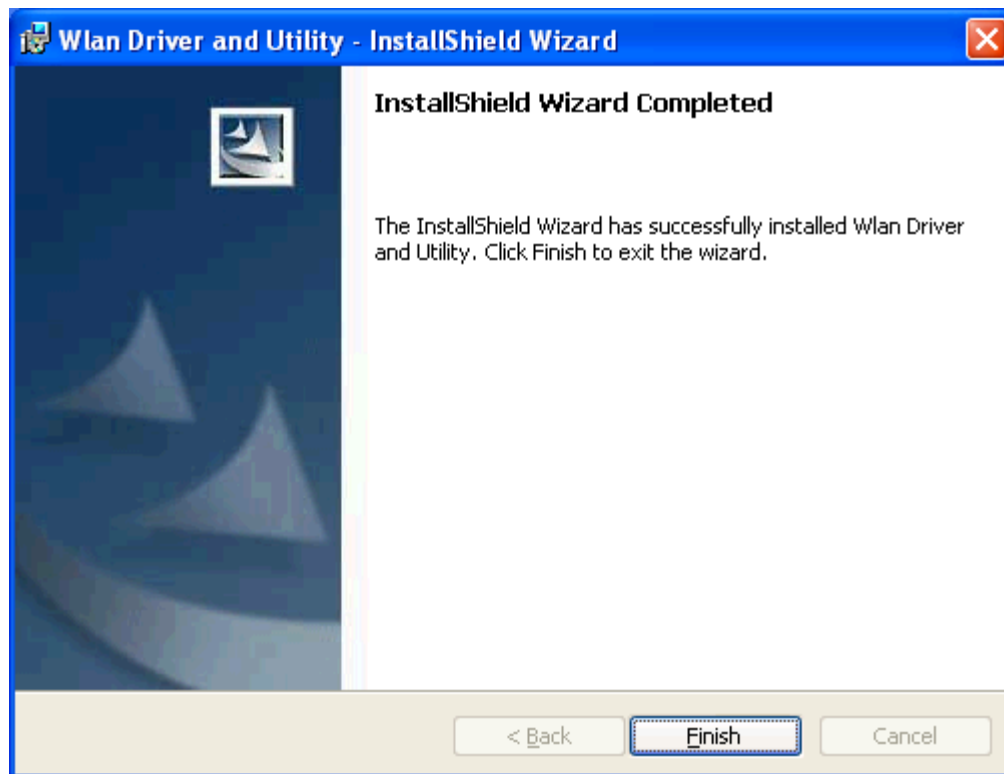
Step 6. Windows will notify you that the driver has not passed the Windows Logo testing. Because the network adapter has been tested to work with Windows XP, please click **Continue Anyway** to proceed.

Figure 2.6



Step 7. When the InstallShield Wizard has successfully installed Wireless Cardbus/PCI Network Adapter Driver and Utility, click **Finish** to confirm.

Figure 2.7



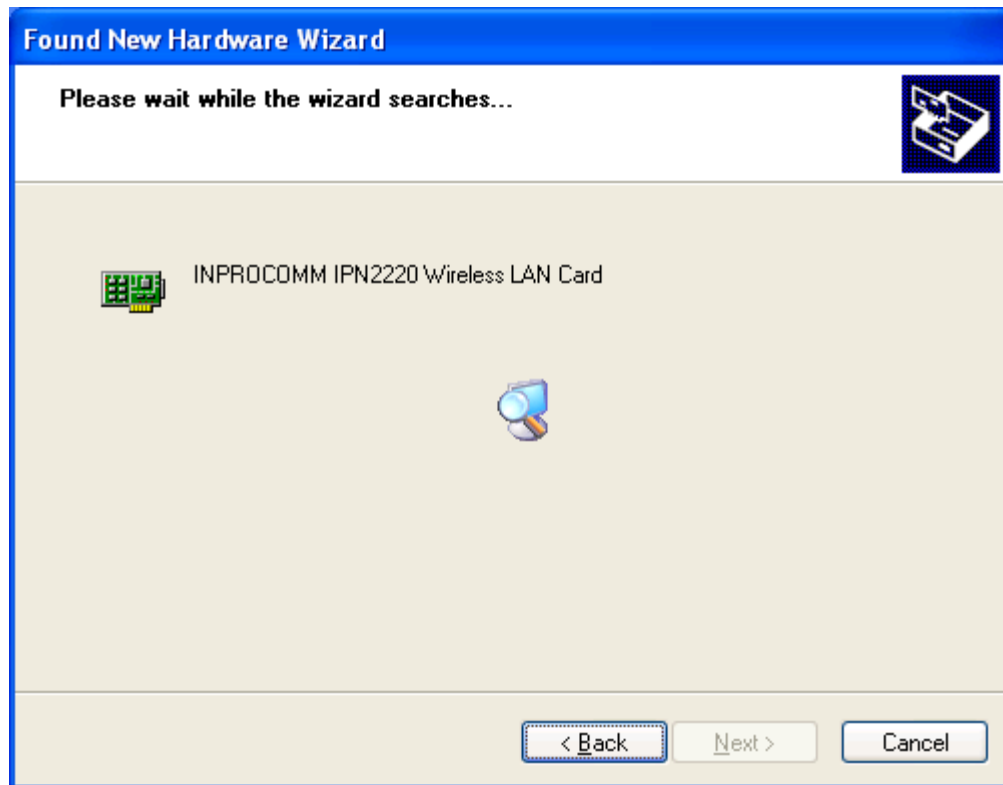
Step 8. Insert / attach Wireless Cardbus/PCI Network Adapter Network Adapter to your system. Windows will display the *Welcome to the Found New Hardware Wizard* box as Figure 2.8. Select *Install the software automatically [Recommended]*, and then click **Next** to continue.

Figure 2.8



Step 9. The searching box will appear. Please wait for the next screen.

Figure 2.9



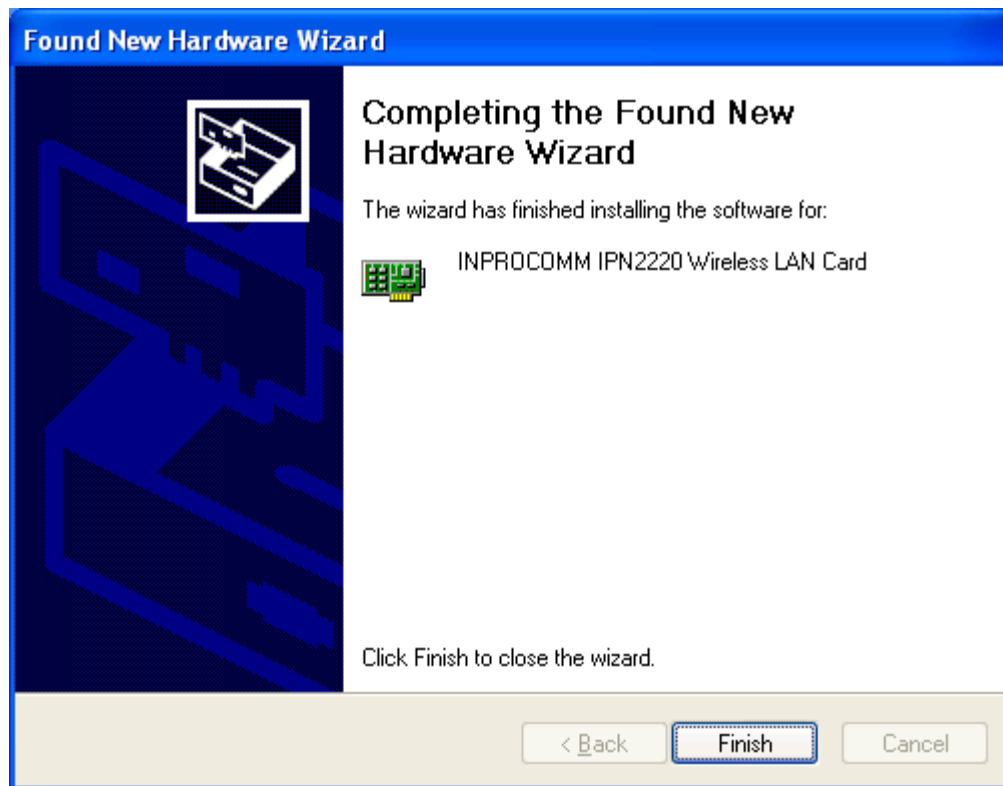
Step 10. Windows will notify you that the driver has not passed the Windows Logo testing. Because the network adapter has been tested to work with Windows XP, please choose **Continue Anyway**.

Figure 2.10



Step 11. The *Completing the Found New Hardware Wizard* dialog box will appear. Click **Finish**.

Figure 2.11



Step 12. Click the right key of mouse on **MY computer** → **Properties** → **Hardware** → **Device Manager** for checking whether the WLAN Adapter is consisted in the menu.

2.2 Uninstall Procedure

Step 1. If you would like to uninstall the Wireless Cardbus/PCI Network Adapter, follow the instructions.

Control Panel → **Add or Remove Programs**.

In the programs list, you can see the current installed programs. Click **Remove**. A dialogue box will pop out asking *Are you sure you want to remove Wlan Driver and Utility from your computer?* Click **Yes** to remove the program.

Step 2. Restart your Computer.

3. Configuration Utility


1. A new icon -  will appear in your Icon tray after installing the Wireless Cardbus/PCI Network Adapter card.

Figure 3.1 Icon tray with a new icon



Attention:

In Windows XP system, there are two ways to configure your wireless Lan setting.

1. Use Windows XP build-in service, called “Wireless Zero Configuration”, or
2. Use the configuration utility we offered.

If you wish to use the Windows XP built-in utility, click **Start→Settings→Control Panel→Administrative Tools→Services→ Wireless Zero Configuration**. Click with right key of mouse, and then select **Start**. The Windows XP built-in utility will lead you to configure.

Otherwise, to use the configuration utility we offered, please follow the steps:

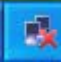
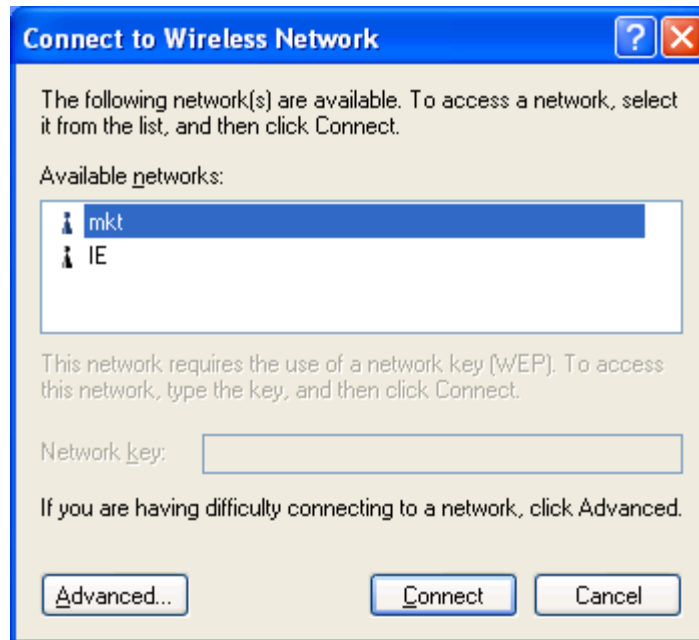
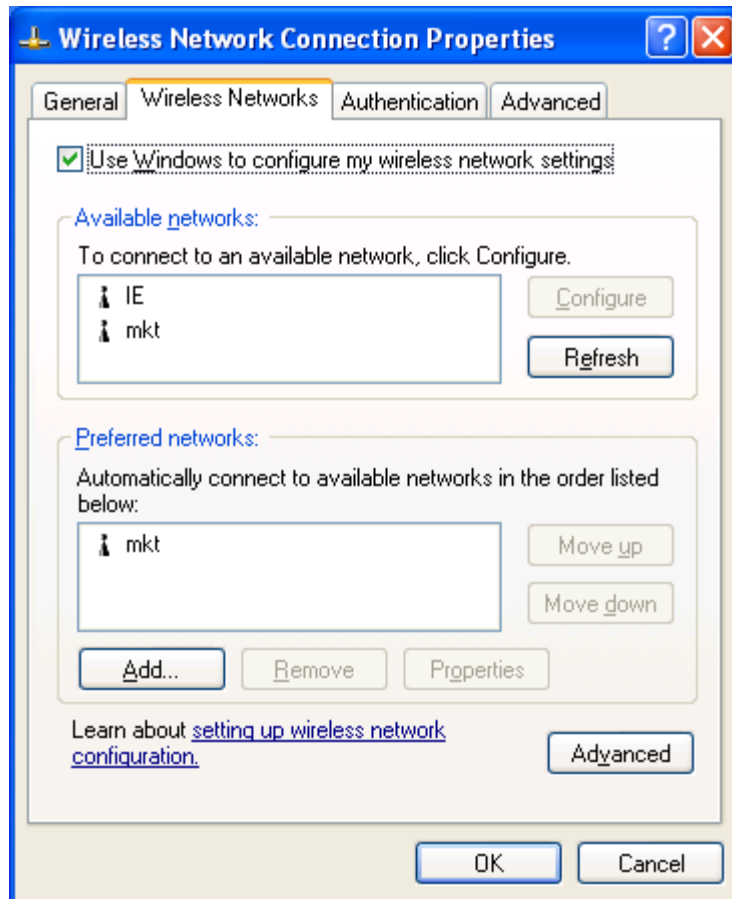
2. Click  icon with the left key of mouse from icon tray. Select *View Available Wireless Network*, and then Figure 3.2 will appear. You can see the list of available networks. In this example, the available network's name is "mkt".

Figure 3.2



3. Click **Advanced**, and then Figure 3.3 will appear. If your system is Windows XP, the *Use Windows to configure my wireless network settings* item will be checked. The Windows XP has built configuration driver within system, and it will direct you to configure the settings.

Figure 3.3




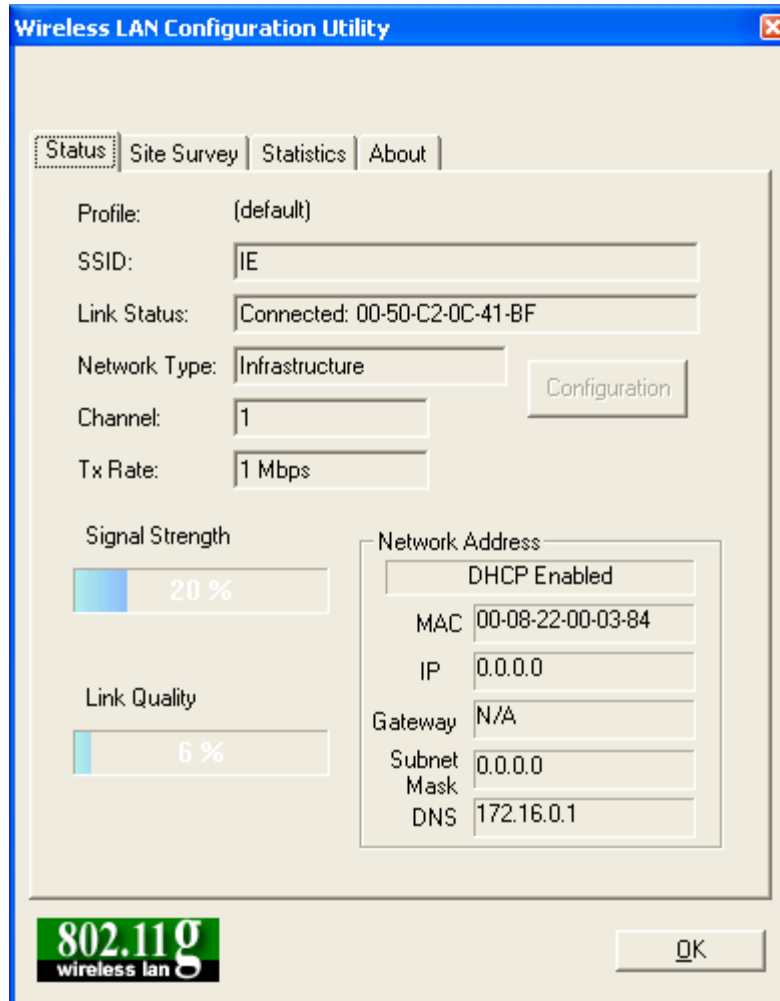
4. If your system is Windows 95/98/NT/Me/2000, then simply click  icon, the *Wireless LAN Configuration Utility* screen will appear. In this screen, you can click on each item listed above.

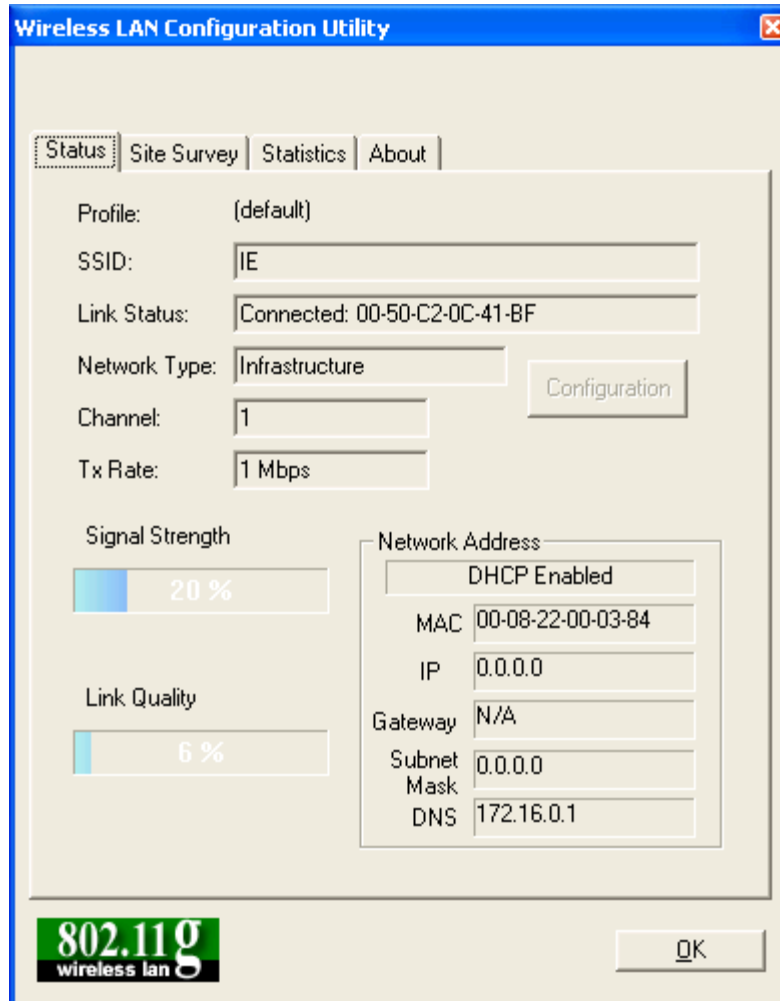
Figure 3.4



Status

Figure 3.6 shows **Status**. You can check profile, SSID, link status, network type, channel, Tx rate from this item. The signal strength and link quality are shown in diagram on the left down of screen.

Figure 3.6



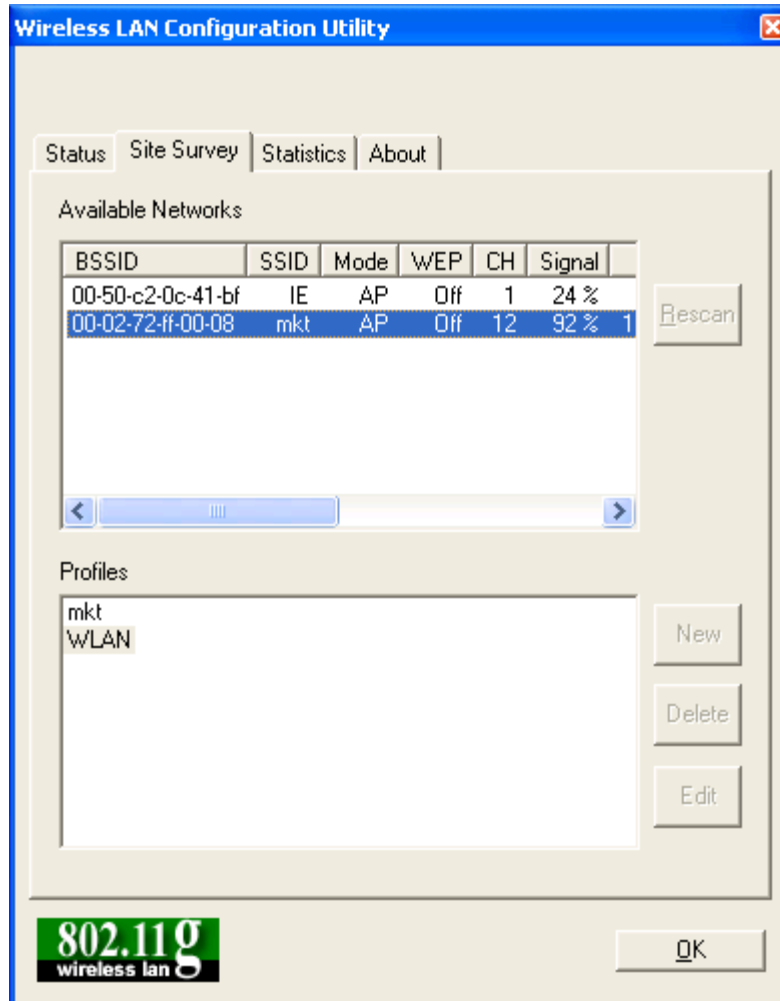
The image shows a screenshot of the 'Wireless LAN Configuration Utility' window, specifically the 'Status' tab. The window has a blue title bar and a standard Windows-style interface. The 'Status' tab is selected, showing various network configuration details. The 'Profile' is set to '(default)'. The 'SSID' is 'IE'. The 'Link Status' is 'Connected: 00-50-C2-0C-41-BF'. The 'Network Type' is 'Infrastructure'. The 'Channel' is '1'. The 'Tx Rate' is '1 Mbps'. There is a 'Configuration' button next to the 'Network Type' field. Below these fields, there are two progress bars: 'Signal Strength' at 20% and 'Link Quality' at 6%. To the right of these bars is a 'Network Address' section with fields for 'DHCP Enabled' (checked), 'MAC' (00-08-22-00-03-84), 'IP' (0.0.0.0), 'Gateway' (N/A), 'Subnet Mask' (0.0.0.0), and 'DNS' (172.16.0.1). At the bottom left is an '802.11g wireless lan' logo, and at the bottom right is an 'OK' button.

Field	Value
Profile	(default)
SSID	IE
Link Status	Connected: 00-50-C2-0C-41-BF
Network Type	Infrastructure
Channel	1
Tx Rate	1 Mbps
Signal Strength	20 %
Link Quality	6 %
DHCP Enabled	Enabled
MAC	00-08-22-00-03-84
IP	0.0.0.0
Gateway	N/A
Subnet Mask	0.0.0.0
DNS	172.16.0.1

Site Survey

Figure 3.7 shows site survey. Site survey tells you the networks available now.

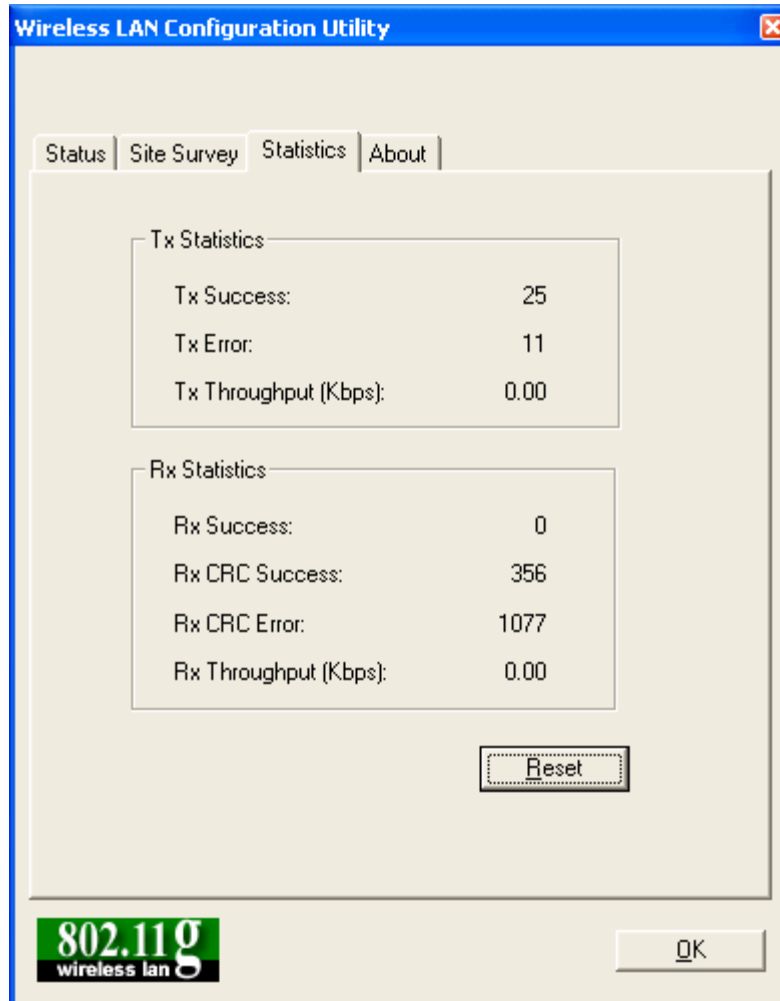
Figure 3.7



Statistics

Figure 3.8 shows **Statistics**. It counts the activity of transmitting packets. Tx and Rx statistics are shown in two parts separately, you can know the working status of networking from the list.

Figure 3.8



About

Figure 3.9 shows About. About shows the version of driver and driver.

Figure 3.9



4. Specifications

3.1 Technical Specifications

Standards	IEEE 802.11b, IEEE 802.11g
Modulations	802.11b: CCK (11 Mbps), DQPSK (2 Mbps), DBPSK (1 Mbps) 802.11g: OFDM
Channel	1~11 Channels (North America) 1~13 Channels (Europe) 1~14 Channels (Japan)
Interface	Cardbus/PCI
Speed	Up to 54 Mbps
LEDs	Power, Link
WEP Key Bits	64 bit and 128 bit
Output Power	12dBm

3.2 Environmental Information

Dimensions (WxHxD)	115 x 54 x 7.5 mm
Unit weight	47g
Power	3.3V Bus powered
Operating Temperature	0°C to 40°C (32°F to 104°F)
Storage Temperature	-40°C to 70°C (-40°F to 158°F)
Operating Humidity	20% to 95% Non-condensing
Storage Humidity	20% to 95% Non-condensing
Certifications	FCC, CE

Appendix A: Warranty Information

We provide this limited warranty for its product only to the person or entity who originally purchased the product from us or its authorized reseller or distributor. We guarantee that equipment is free from physical defects in workmanship and material under normal use from the date of original retail purchase of the Hardware. If the product proves defective during this warranty period, call our Customer Service in order to obtain a Return Authorization number. Be sure to have a proof of purchase on hand when calling. Return requests cannot be processed without proof of purchase. When returning a product, mark the Return Authorization Number clearly on the package pack and include your original proof of purchase. All customers outside the R.O.C shall be held responsible for shipping and handling charges.

In no event shall our liability exceed the price paid for the product from direct, incidental or consequential damage resulting from the use of the product, its accompanying software, or its documentation. We make no warranty or representation, expressed, implied, or statutory, with respect to its products or the contents or use of this documentation and all accompanying software, and specifically disclaims its quality, performance, merchantability, or fitness for any particular purpose. We reserve the right to revise or update its products, software, or documentation without obligation to notify any individual or entity.