

KEY SWITCH

MATERIAL: Industrial Silicone Rubber
 LIFE: Greater Than 10 Million Cycles
 TRAVEL: 0.055 in.
 ACTUATION FORCE: 6.35 oz. +/- 1.06oz (180g +/- 30g)
 FEEDBACK: Tactile with Mechanical Snap

POWER

PS2:
 KEYBOARD: 50mA@5V (from Keyboard port)
 POINTER: 10mA@5V (from Mouse port)
 USB: 60mA@5V (from CPU port)

TEMPERATURE RANGE

STORAGE: -40°F to +149°F (-40°C to +65°C)
 OPERATING: +32°F to +140°F (0°C to +60°C)

HUMIDITY

100% Humidity Resistant

VIBRATION

POWER SPECTRAL DENSITY: .04g²/HZ
 FREQUENCY RANGE: 20Hz-2Khz
 DURATION OF TEST PER AXIS: 3 hours

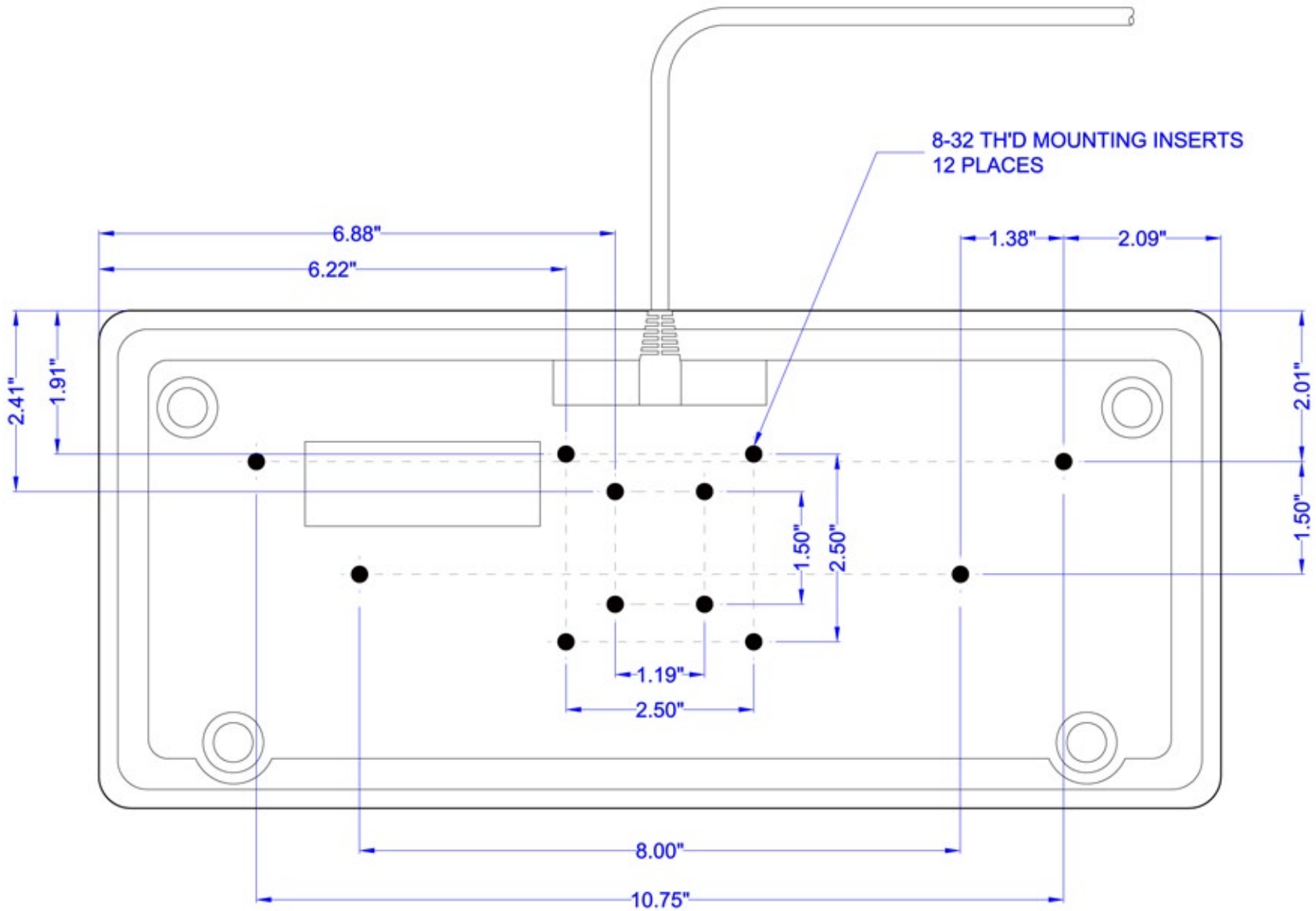
SHOCK

3 X 11 ms pulses of 50g on each of 3 axis

WEIGHT

2.25 lbs +/- 0.10 lbs (1.02 kg +/- 0.05 kg)

SCALE: 1:2



ENCLOSURE CASE: ABS/Polycarbonate

SCALE: 1:2