

Installation Guide

General Information

Item Checklist

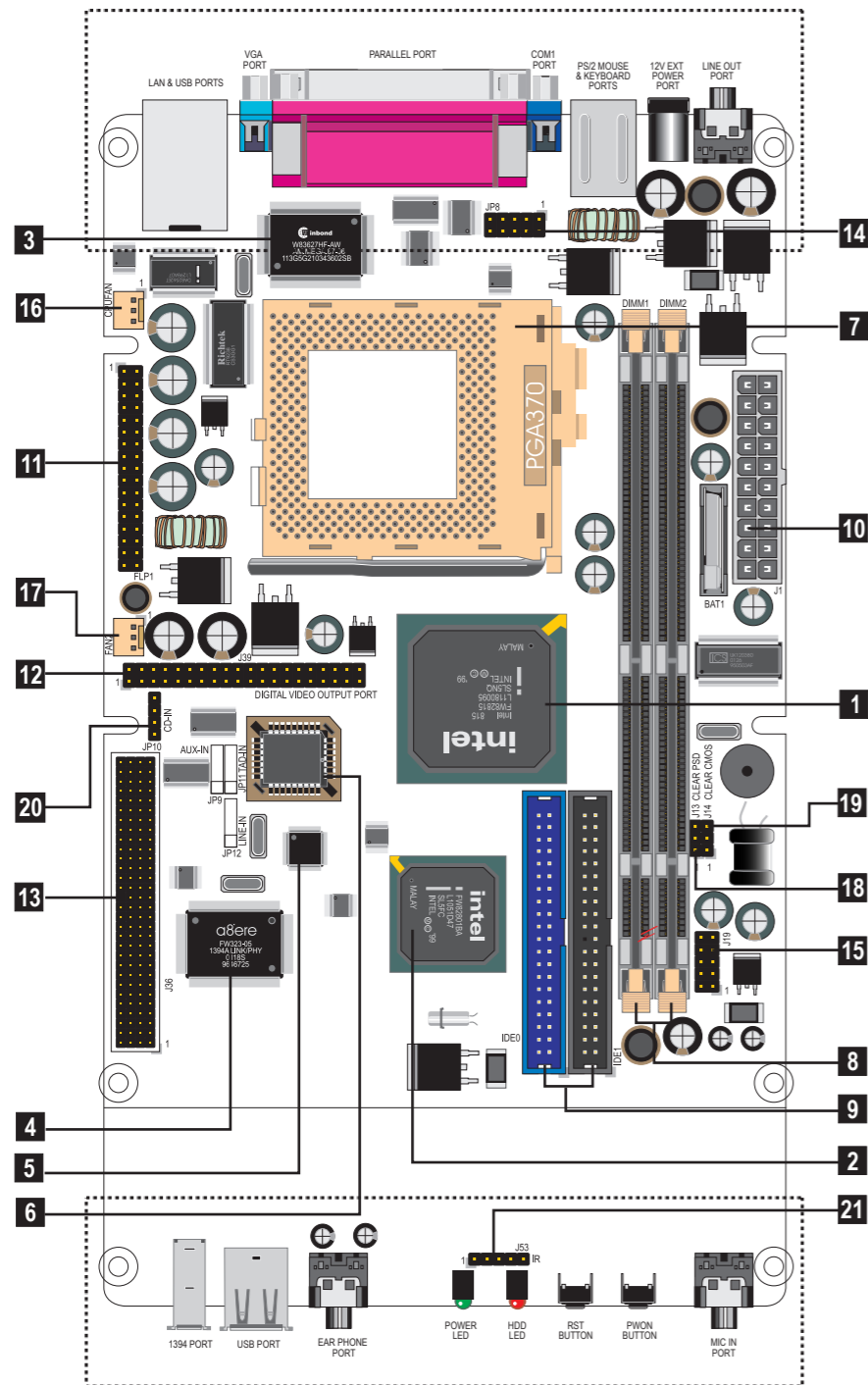
A. System Part List:

1. Mainboard
2. Installation Guide
3. CD
4. Power Adapter
5. Power Cable
6. Plastic Spacer (4 pcs)
7. CPU Fan

B. Barebone System Part List:

1. Mainboard
2. Installation Guide
3. Unpacking Guide
4. CD
5. Power Adapter
6. Power Cable
7. Plastic Spacer (4 pcs)
8. CPU Fan
9. EMI Sticker (2 pcs)
10. HDD Screws (5 pcs)
11. CD-ROM Screws (5 pcs)
12. CD-ROM Adapter Screws (3 pcs)
13. Case Screws (2 pcs)

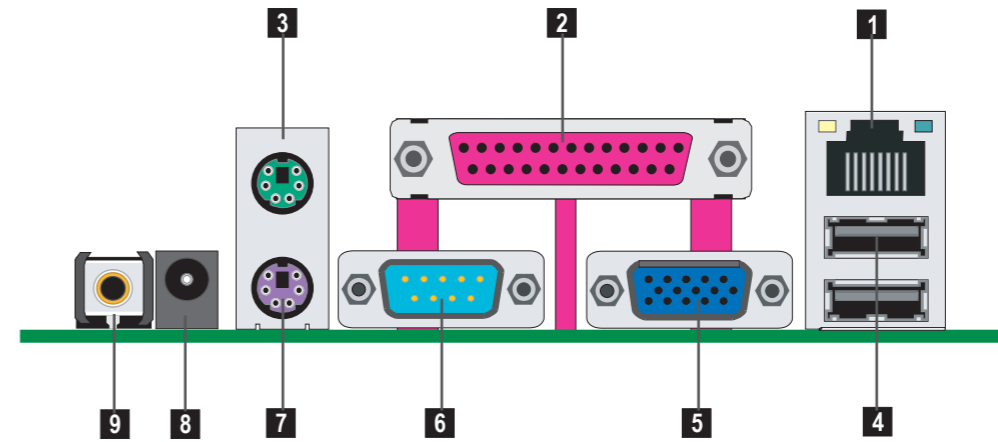
Mainboard Layout



1	Intel 815 Chipset
2	Intel 801BA Chipset
3	I/O Chipset
4	1394 Chipset
5	Audio CODEC Chipset
6	Flash EEPROM
7	CPU Socket 370
8	DIMM Sockets
9	IDE Connectors
10	ATX Power Connector
11	Floppy Connector
12	Digital Video Output Port
13	PC104 Plus Connector
14	COM2 Port
15	GPIO Connector
16	CPU FAN
17	System FAN
18	Clear Password
19	Clear CMOS
20	CD-IN Connector
21	IR Connector

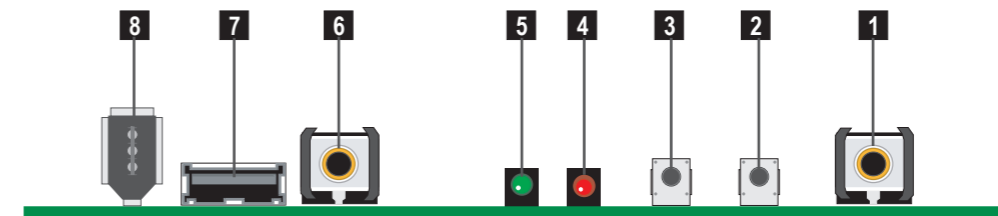
● Please refer to jumper setting

Back Panel Connector



1	LAN Port
2	Parallel Port
3	PS/2 Mouse Port
4	USB Ports
5	VGA Port
6	Serial COM1 Port
7	PS/2 Keyboard Port
8	12V Power Port
9	LINE-Out Port

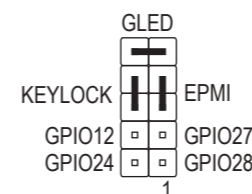
Front Panel Connector



1	MIC-In Port
2	Power Button
3	Reset Button
4	HDD LED
5	Power LED
6	Ear Phone Port
7	USB Port
8	1394 Port

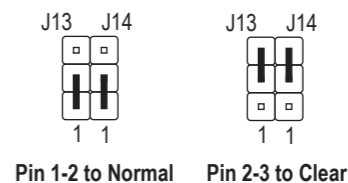
Jumper Setting

15 GPIO / KEYLOCK / GLED / EPMI (JP19 Pin Assignment)

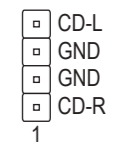


18 CLEAR PASSWORD (J13)

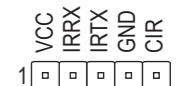
19 CLEAR CMOS (J14)



20 CD-IN (JP10 Pin Assignment)



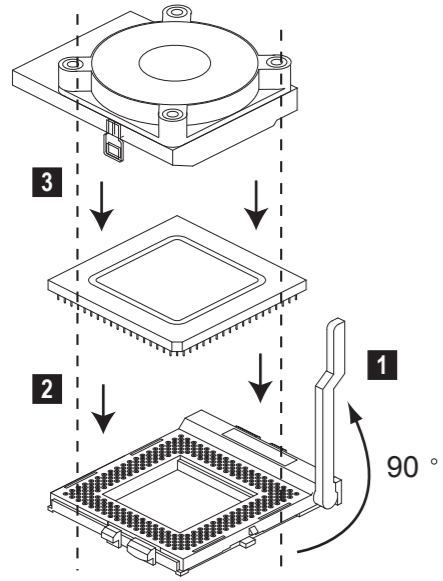
21 IR (J53 Pin Assignment)



Installation Guide

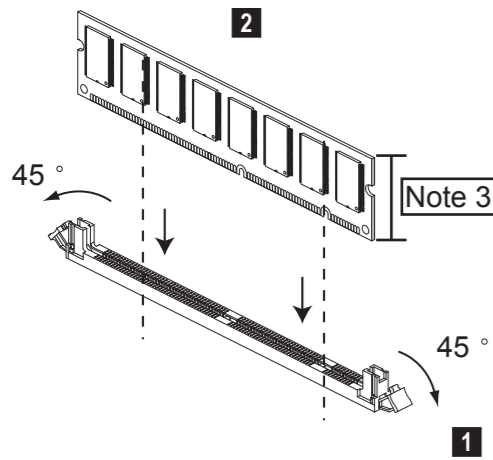
Hardware Installation

Install CPU / FAN



- 1 CPU socket level up to 90-degree.
- 2 Install CPU on CPU socket. (Match socket pin 1 and CPU cut edge)
- 3 Install CPU cooler.

Install Memory

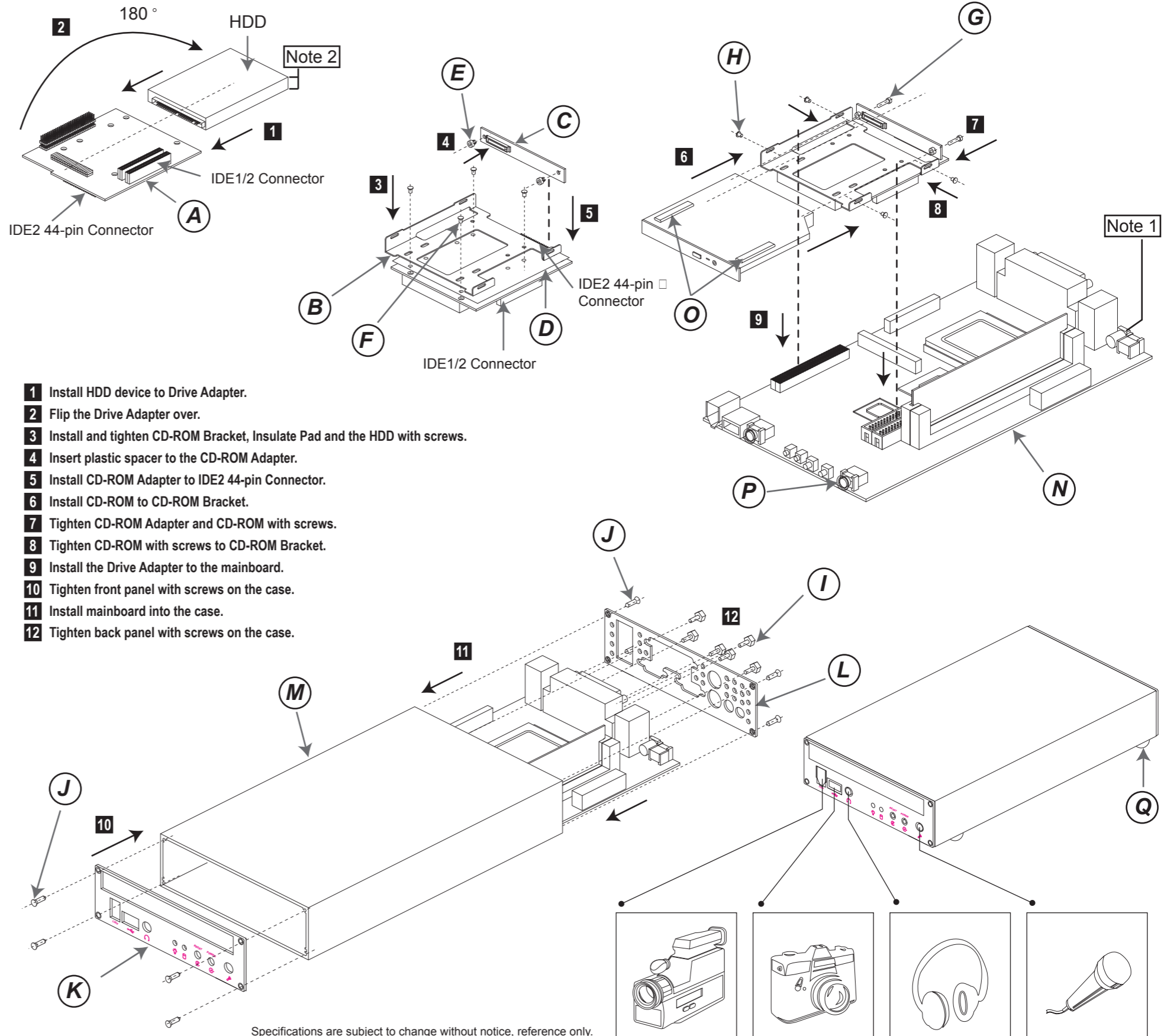


- 1 DIMM socket level up to 45-degree.
- 2 Install memory module into the DIMM socket.

System Installation

Part List

- (A) Drive Adapter
- (B) CD-ROM Bracket
- (C) CD-ROM Adapter
- (D) Insulate Pad
- (E) Plastic Spacer (* 2)
- (F) HDD Screws (* 4)
- (G) CD-ROM Adapter Screws (* 2)
- (H) CD-ROM Screws (* 4)
- (I) Print/COM/VGA Screws (* 6)
- (J) Case Screws (* 8)
- (K) Front Panel
- (L) Back Panel
- (M) Case
- (N) PCB
- (O) EMI Sticker (*2)
- (P) Springs (*3)
- (Q) Plastic Spacer (*4)



- 1 Install HDD device to Drive Adapter.
- 2 Flip the Drive Adapter over.
- 3 Install and tighten CD-ROM Bracket, Insulate Pad and the HDD with screws.
- 4 Insert plastic spacer to the CD-ROM Adapter.
- 5 Install CD-ROM Adapter to IDE2 44-pin Connector.
- 6 Install CD-ROM to CD-ROM Bracket.
- 7 Tighten CD-ROM Adapter and CD-ROM with screws.
- 8 Tighten CD-ROM with screws to CD-ROM Bracket.
- 9 Install the Drive Adapter to the mainboard.
- 10 Tighten front panel with screws on the case.
- 11 Install mainboard into the case.
- 12 Tighten back panel with screws on the case.

- Note**
1. Power input DC 12V only
 2. HDD height <= 0.35 inch. (9 mm)
 3. SDRAM module height <= 0.8 inch. (20.32 mm)

Specifications are subject to change without notice, reference only.

